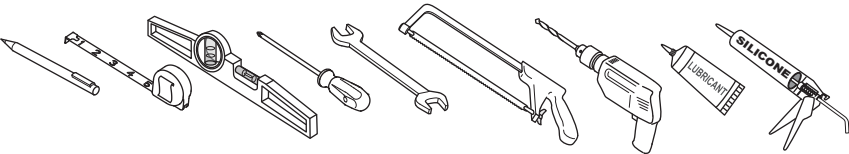


# Installation Instructions

ver 3.0

LOW LEVEL / CLOSE COUPLED-SYPHON



## GENERAL INFORMATION



### WARNING

Do not use or drop any chlorine or chemical related components into the cistern or closet bowl.  
Use of such products will:  
(a) Result in damage to tank components, and may cause flood and property damage.  
(b) Void warranty.

### Important Notes

There may be a flow restrictor pre-installed in the inlet valve, which should be removed for installations with very low supply pressure. Please see the inlet valve section. Take care to avoid cross threading. Do not over-tighten back nuts. Care should be taken when drilling walls and floors to avoid any sunken wires or pipes. Servicing valve: The Water Regulations have a requirement to fit a servicing valve adjacent to the cistern (not supplied). Do not over tighten nuts or cistern / bowl may crack.

### Parts Required (not supplied)

Brass Screws and Fixing Plugs to secure the cistern and closet bowl.

### Operating Water Pressure For Inlet Valve

See Inlet Valve Instructions

## INSTALLATION: PREASSEMBLED CISTERNS

Fixing bolts or coupling plate, blanking plugs, inlet valve and syphon are factory fitted. The syphon is supplied pre-set to deliver the flushing volume specified. Only the lever assembly requires fitting (Fig.3).

Check all joints to ensure they are sound and watertight

- stainless steel nuts on fixing bolts
- blanking plugs
- inlet and syphon nuts, checking that the syphon and inlet valve are not in contact with each other or the cistern walls and the lever arm is directly above the syphon actuator and operates freely.

See inlet valve section for adjustment and fitting of filter and flow restrictor instructions. Check that the inlet valve float is correctly adjusted to shut off at the waterline marked inside the cistern.

## INSTALLATION: UNASSEMBLED CISTERNS

Define lever side and flushing volume required before fitting inlet valve and syphon. Blanking plugs are supplied for unused alternative positions. For close coupled suites, define coupling method. Install fixing bolts, inlet valve, syphon and lever (Fig. 1, Fig. 2, Fig. 3)

Check all joints to ensure they are sound and watertight

- stainless steel nuts on fixing bolts
- blanking plugs
- inlet and syphon nuts, checking that the syphon and the inlet valve are not in contact with each other or the cistern walls and the lever arm is directly above the syphon actuator and operates freely.

See inlet valve section for adjustment and fitting of filter and flow restrictor instructions. Check that the inlet valve float is correctly adjusted to shut off at the waterline marked inside the cistern.

## CISTERN ASSEMBLY

### Bottom inlet

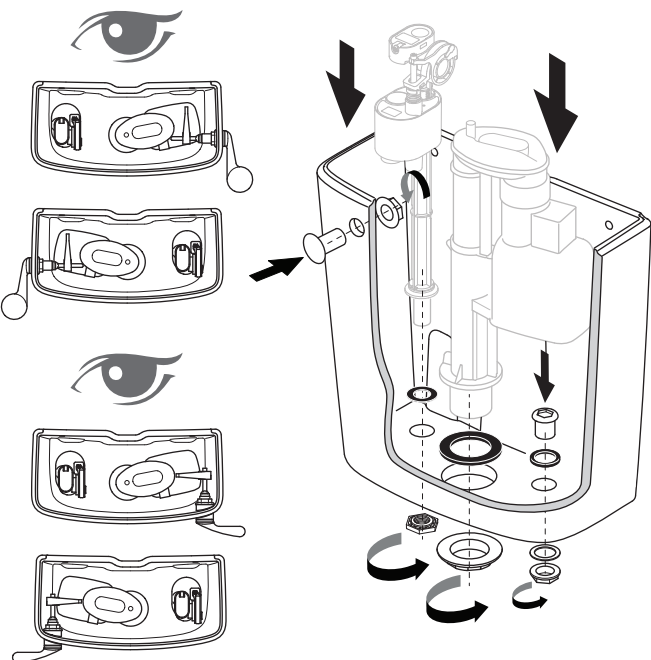


Figure 1

### Side inlet

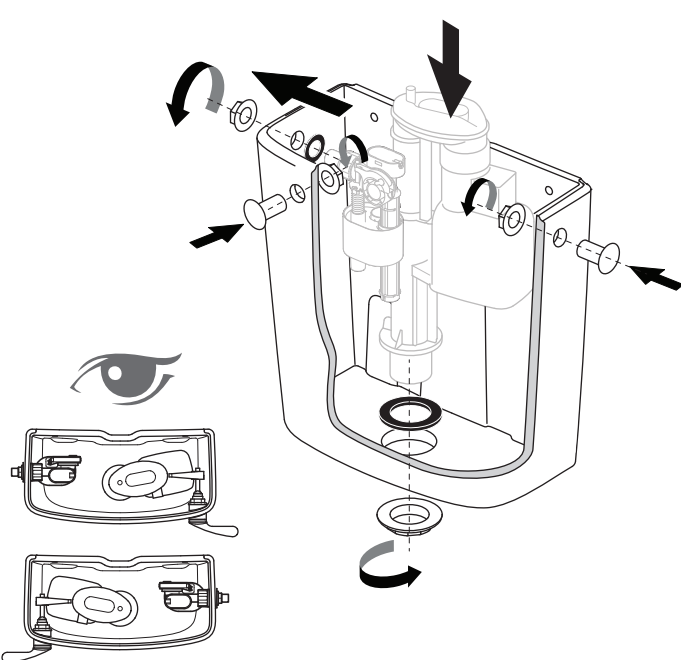


Figure 1.1

CLOSE COUPLING ASSEMBLY

Cisterns with through bolting

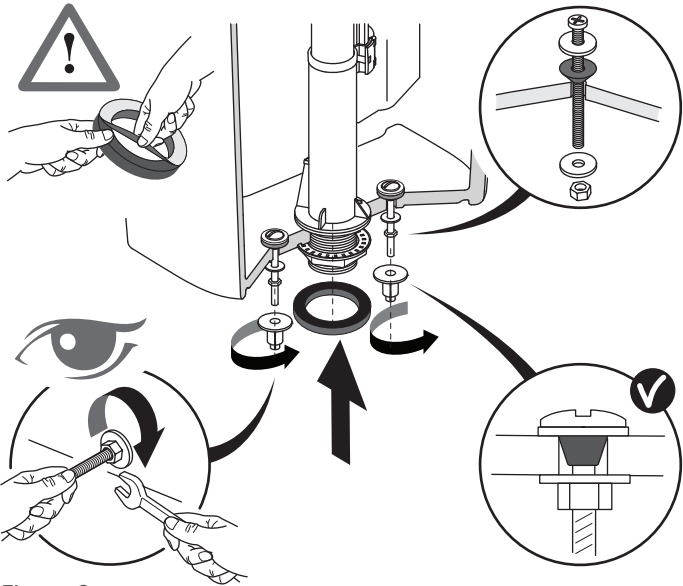


Figure 2

Cisterns with close coupling plate

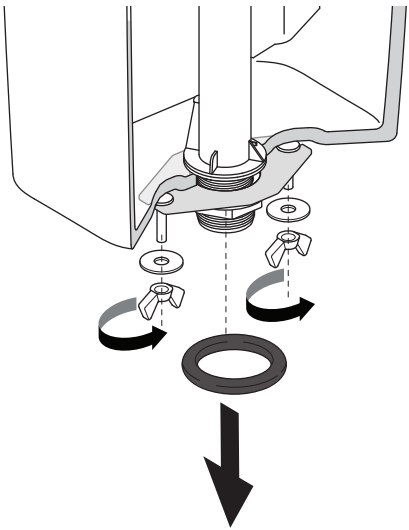


Figure 2.1

LEVER ASSEMBLY

Front Operating Lever

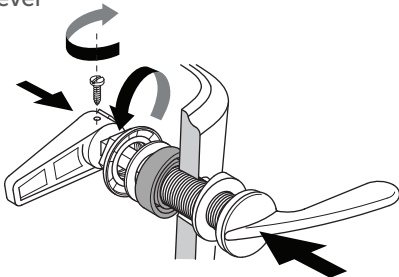


Figure 3

Side Operating Lever

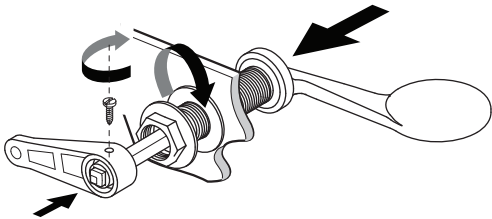


Figure 3.1

SYPHON

NOTE: For preassembled cisterns, the syphon is supplied pre-set to deliver the volume specified. **No adjustment is necessary.**

Before installing syphon

Please check the flushing volume specifications available for the cistern supplied.

For unassembled cisterns with single flush volume option only, the syphon is supplied pre-set to deliver the volume specified. **No adjustment is necessary.**

For unassembled cisterns with a low flushing option, the syphon is supplied pre-set to deliver the highest flushing volume. Adjustment is necessary for lower volume.

Cistern Type	Cistern SKU Code	Flush Volume (L)		
		6	4.5	4
Sandringham 21	E896901	*		
	E897201	*		
	E876301	*		*
	E896801	*		*
	E900201	*		*
	E898701	*	*	
Contour 21	S369601		*	
	S365401		*	

Syphon supplied with two hole positions and one plug

To adjust for lower flush volume setting, remove the plug and replace in the alternative lower hole position. (Fig.4 & Fig.4.1)

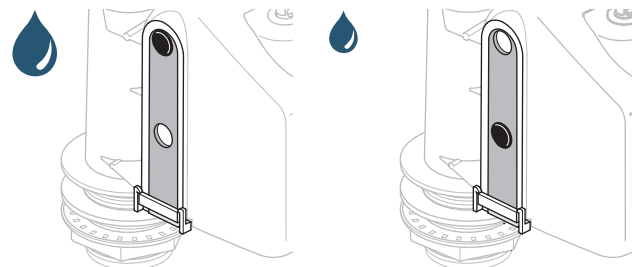


Figure 4

Figure 4.1

Syphon supplied with three hole positions and two plugs

To adjust for lower flush volume setting, remove the plug and replace in the alternative next lowest hole position. (Fig.5 & Fig.5.1)

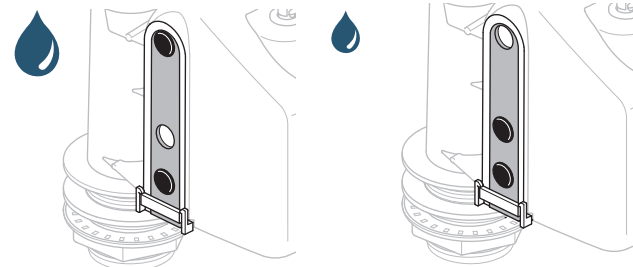


Figure 5

Figure 5.1

# Low level

## INSTALLATION

Position and fix cistern support brackets to the wall, (Fig. 6). Brackets are to be located within the recess at the back of the cistern, (bracket fixings not supplied).



Figure 6

Position cistern on cistern support brackets (Fig. 6) with cistern lid removed mark screw hole positions on wall. Remove cistern and drill and plug wall. Reposition cistern and screw to wall (screws not supplied). Seal rear screw fixing holes with silicone sealant (Fig. 8).

Position closet bowl and mark closet screw holes positions on floor. Remove closet bowl and drill floor to suit fixings, (not supplied) (Fig. 6).

Install the seat (see instruction supplied with seat). Insert flush pipe connector (Fig. 7) into closet bowl inlet, if unit is supplied with flow restrictor, then this is placed into closet bowl inlet before flush pipe connector.

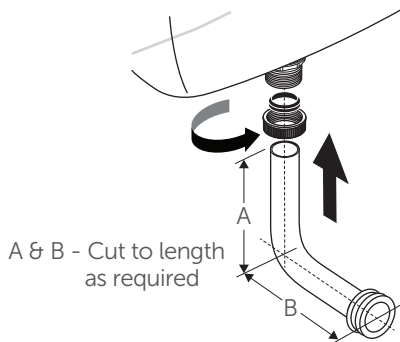


Figure 7

Reposition closet bowl towards the wall (Fig. 8) and its marked screw hole position, connecting waste outlet (not supplied). Insert flush pipe into the flush pipe connector. Place coupling nut and coupling washer on to the vertical end of the flush pipe. Insert flush pipe into the syphon and tighten the coupling nut with coupling washer in place. Flush pipe may need cutting down to suit arrangement.

Screw closet bowl to floor (screws not supplied).

Connect inlet valve to water supply pipework and fill cistern.

Turn water on then check all connections for leaks, all moving parts function & move freely and adjust the inlet valve so it shuts off at the marked waterline if necessary.

Install the cistern lid cover fastener where used.

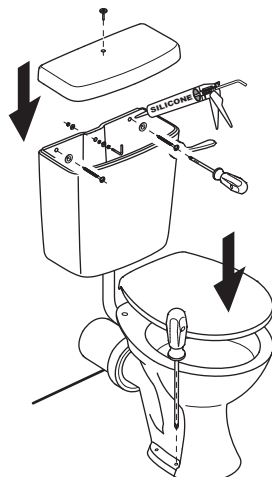


Figure 8

# Close coupled

## INSTALLATION

Position closet suite to wall, (Fig. 9). With cistern lid removed mark cistern screw hole positions on wall and mark closed bowl screw hole positions on floor. Remove closet suite, drill and plug wall and floor.



Figure 9

For closet suites supplied with their own individual floor fixation kit.

Position and mark the outline of the closet bowl on the floor. Mark on the floor at both sides of the closet bowl, the position of the screw holes in the closet foot. Remove closet bowl, draw a line on the floor joining the marks which indicate the screw hole positions. Mark the position for the two fixing screws 40mm in from the line drawn around the closet, drill, plug and fit brackets to foot, (Fig. 10).

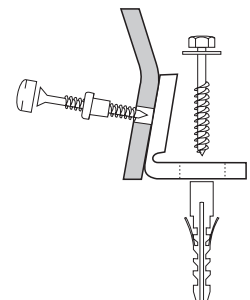
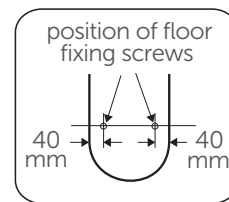


Figure 10

Install the seat (see instruction supplied with seat). Reposition closet suite to wall (Fig. 11), connecting waste outlet (not supplied) and screw closet bowl to floor and cistern to wall, (screws not supplied). Seal rear screw fixing holes with silicone sealant (Fig. 11).

Connect inlet valve to water supply pipework and fill cistern.

Turn water on then check all connections for leaks, all moving parts function & move freely and adjust the inlet valve so it shuts off at the marked waterline if necessary.

Install the cistern lid cover fastener where used.

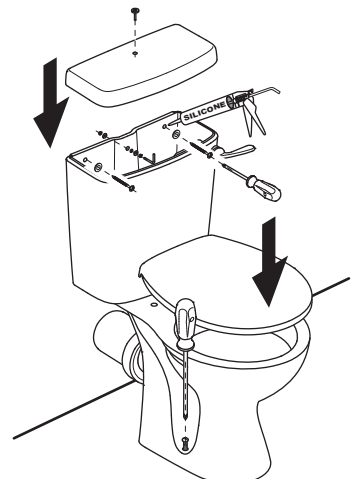


Figure 11

## INLET VALVE

### GENERAL INFORMATION

Before fitting any valve, the supply pipe should be flushed clear.

This inlet valve operates with supply pressures above 0.1 bar to 10 bar as supplied. It contains a flow restrictor which must be removed for pressures of 0.2 bar & lower to a minimum of 0.1 bar. Take care to avoid cross threading. Hand tighten nuts, then give 1/8 turn by spanner. Do not overtighten. The valve is fully tested before leaving the factory, no dismantling is necessary.

### FLOAT ADJUSTMENT

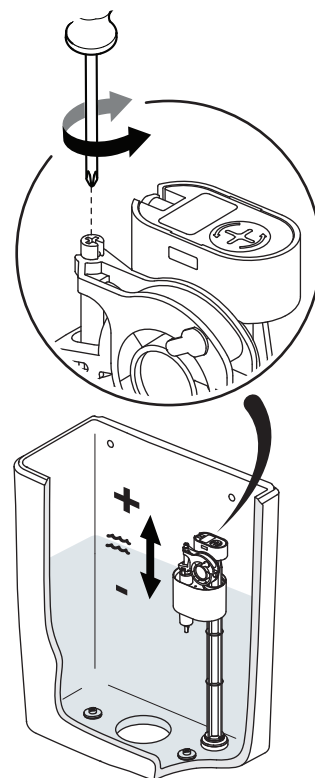
Use a screwdriver to raise and lower the shut off float assembly.

Look for the marked waterline inside the cistern.

Flush the cistern and check it refills to the marked water line, if not, rotate the stalk with a screwdriver – clockwise to raise the shut off point and anti-clockwise to lower it.

### FLOW RESTRICTOR

If low pressure ( $\leq 0.2$  bar) remove. The flow restrictor is located with the filter. (Fig. 12)



## INLET VALVE MAINTENANCE AND SYPHON SPARES

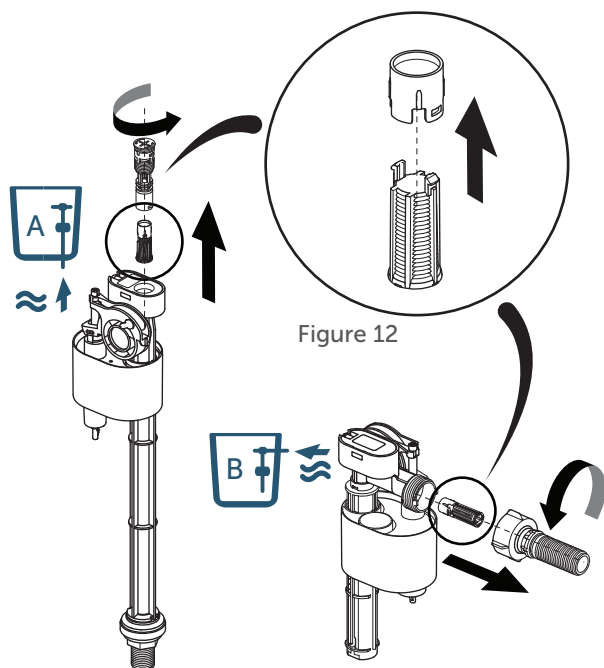


Figure 12

Inlet valves should be checked and cleaned periodically. The inlet valve is fitted with a filter to prevent foreign bodies from impeding the flow. The filter may require occasional cleaning.

Turn off water.

Disassemble the valve as show in the instruction. Use screwdriver if necessary. Carefully remove filter from the valve. Clean the filter. Wash away any foreign matter and check for damage. Replace the filter if necessary. Reassemble the filter.

Turn water on and check all connections for leaks. Check that the inlet valve float shuts off at the waterline marked inside the cistern. To adjust, turn the top of the float stalk.

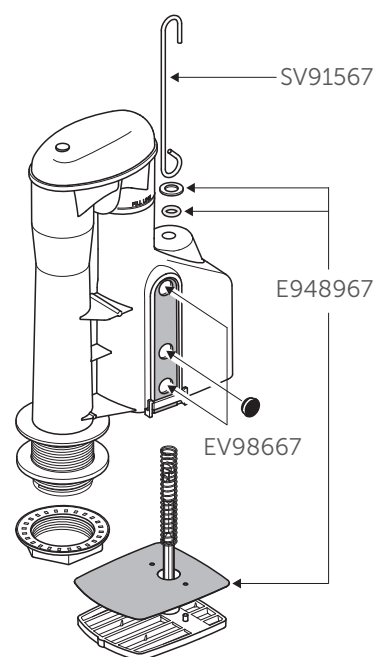


Illustration may not reflect item as supplied.

All cistern components must be installed in accordance with UK water regulations.  
If in doubt please consult a suitably qualified professional.

## CUSTOMER CARE HELPLINE

# 01482 496318

FAX LINE 01482 499611  
email: [customer care@idealstandard.com](mailto:customer care@idealstandard.com)

WW10**0025**67  
ver. 3.0/05.23