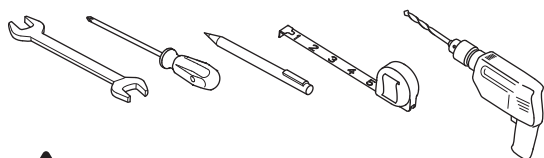
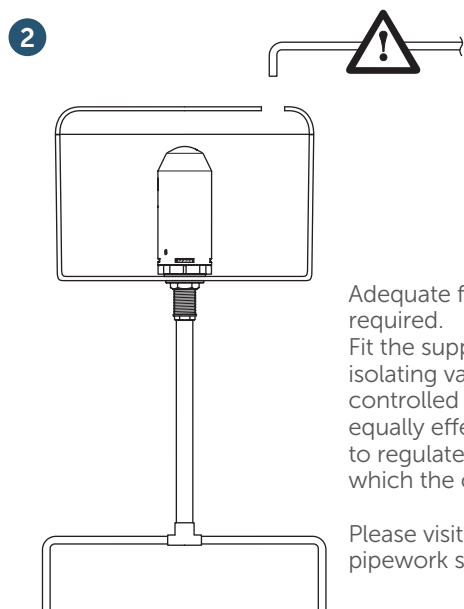
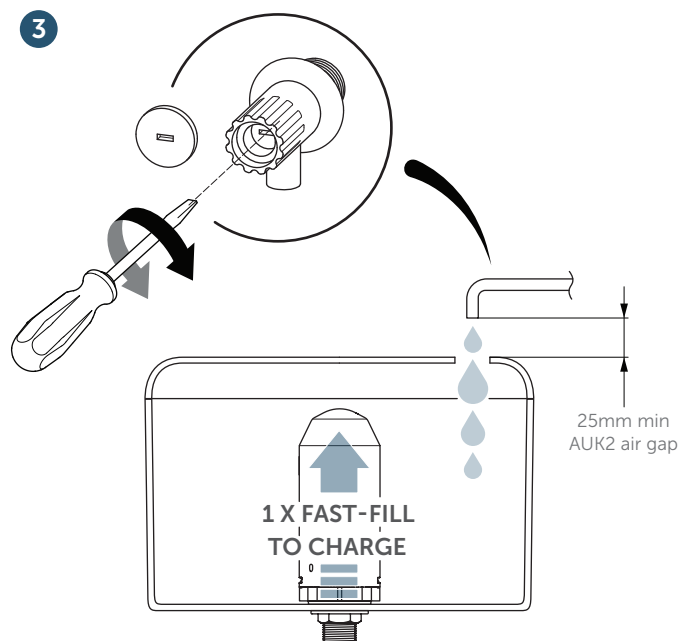
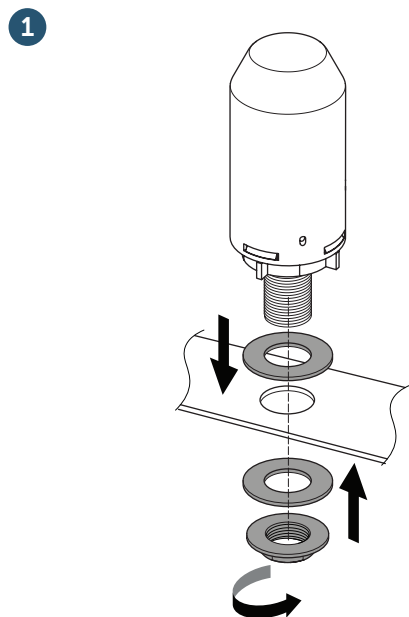


# Installation Instructions AUTO-SYPHON

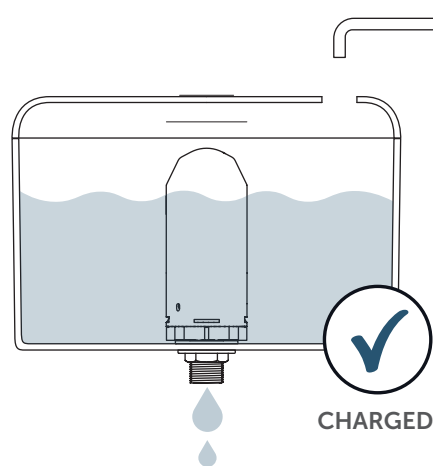


Before installation flush supply pipes and ensure cistern is clean and free from debris. No sealing compound, paste, flux or solvent to be used in contact with plastic or rubber surfaces to avoid damage. Rubber washers will provide adequate seal. PTFE tape may be used on threads. No chemical block/additive to be used in this cistern. Do not over-tighten plastic fasteners.



Adequate flow control and air gap required.  
Fit the supply pipe with a lockable isolating valve and a time controlled isolating valve or equally effective automatic device to regulate the periods during which the cistern may fill.

Please visit IdealSpec for urinal pipework specifications



Check connections are secure and fixed correctly. Connect and turn on water supply. Check installation for leaks. Installer to ensure cistern complies with UK water regulations.

## CUSTOMER CARE HELPLINE

### 01482 496318

FAX LINE 01482 499611  
email: [customer care@idealstandard.com](mailto:customer care@idealstandard.com)

EEM34**4314**67  
ver. 1.0/04.22