

Singular™ from Ideal Standard

Solutions for healthcare



Ideal Standard

*Armitage
Shanks*

The Ideal Standard Group

Ideal Standard International is a leading manufacturer of high-quality residential, commercial and healthcare bathroom solutions. Our portfolio combines expertly crafted products with cutting-edge technology that lead the industry in design and performance.

We offer a wide range of bathroom products including ceramics, taps & fittings, bathing, and furniture and accessories, allowing us to deliver a holistic cross-category solutions through our Singular™ proposition - complete with the peace of mind that everything is made to fit together seamlessly.



Singular™
from Ideal Standard

Armitage Shanks

Supporting the fight against infections

Established more than 200 years ago, Armitage Shanks has developed unrivalled expertise in the design and manufacture of healthcare sanitaryware and fittings.

Our products are designed through close co-operation with infection prevention and control experts, with contours that reduce splashing, materials that inhibit bacteria growth and internal construction that reduces the risk of pooling water.

As part of the Ideal Standard group, Armitage Shanks also follows the Singular™ approach, ensuring products work together seamlessly to create holistic solutions for the healthcare sector.

But our role goes beyond simply supplying products. Throughout our business, are experienced experts who are called on to advise on water safety policy, support with aftercare even years after installation and provide training to in-house maintenance teams, all with the ultimate goal of improving patient safety and comfort.



Where it all comes together.

From inspiration to installation, Singular™ is our end-to-end journey for creating endless cross-category washroom and bathroom solutions for all of our customers.

It's built on our understanding of customer and sector needs, and brings together our specification expertise, design and performance to create solutions that make life easier for everyone.



Looking Deeper

The magazine about safe water management in healthcare environments

As the journal of the Water Safety Forum Looking Deeper has a unique remit – to inform healthcare professionals of the latest news, thinking, research and opinion on safe water management, with a view to infection control.

Published regularly in print and digital formats, it's free and easy to subscribe to.

Each edition covers topics and research that are essential reading for all those involved in the commission, design and maintenance of water systems in healthcare settings, including healthcare engineers and estate management, hospital water safety groups, infection control teams and architects in healthcare.

Recent editions have included features on:

- The effects of climate change and sustainability on healthcare water safety
- The unforeseen consequences for healthcare water management during the Covid-19 pandemic
- How bacteria are 'uniting' to evade antibiotics
- Water safety expert panel discussions examining the safety of drains in healthcare facilities
- Assessment of the infection control priorities in the hospital of the future

Plus, digests of the latest infection prevention research from around the world.

Keeping up with the latest thinking is easy

Now, more than ever, keeping healthcare environments infection-free is vital. Make sure you stay abreast of the latest developments by subscribing to Looking Deeper.

Simply register at www.idealspec.co.uk/resources/whitepapers.html , where you can sign up to receive all future issues and download previous issues.

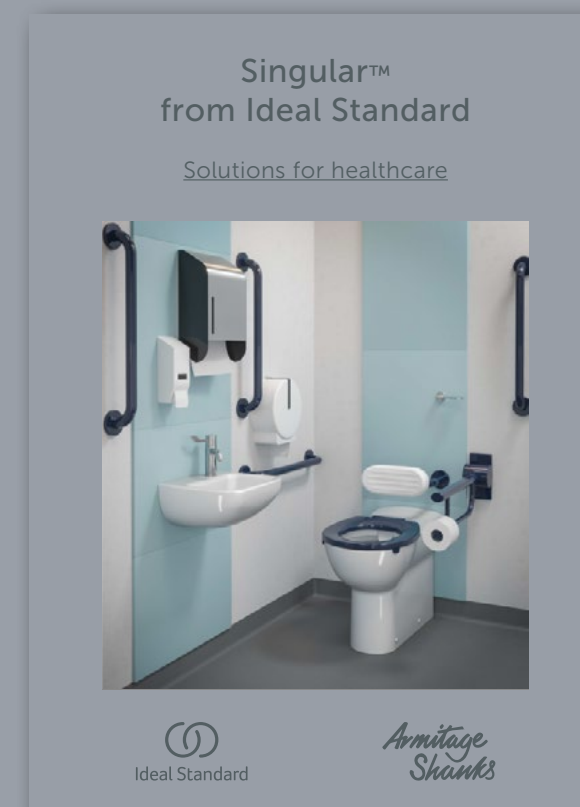
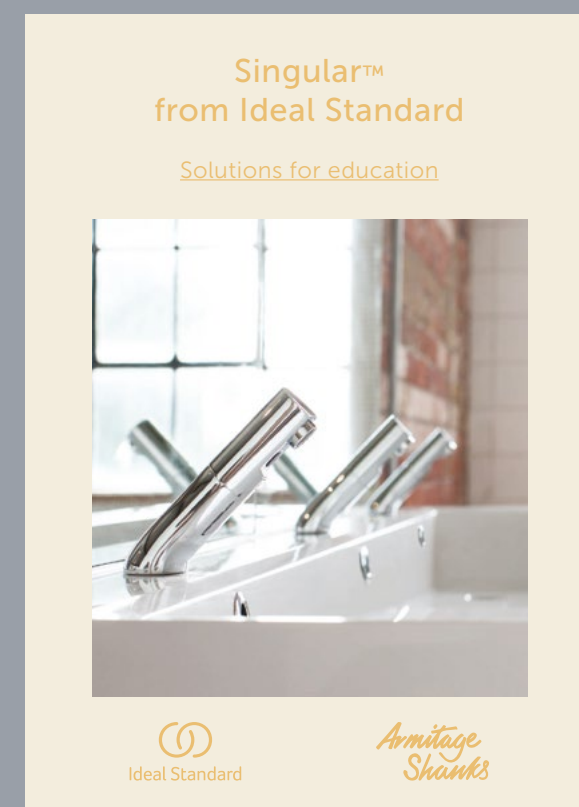
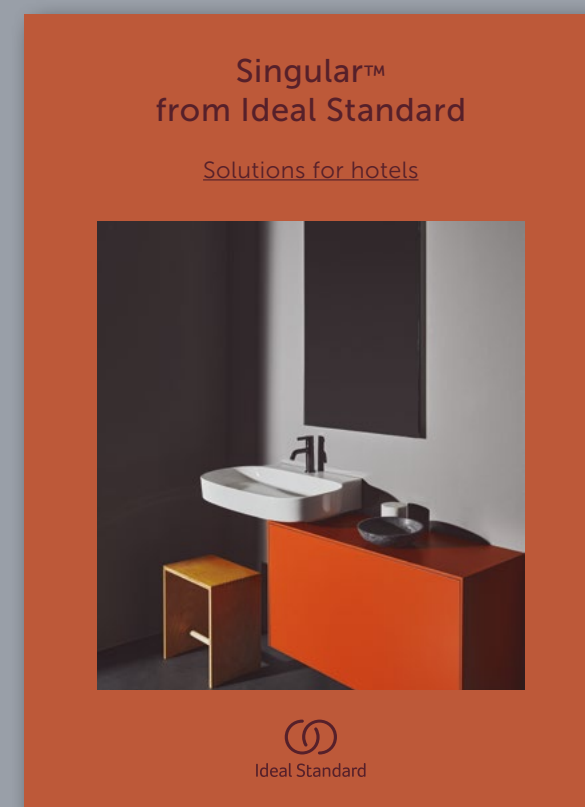
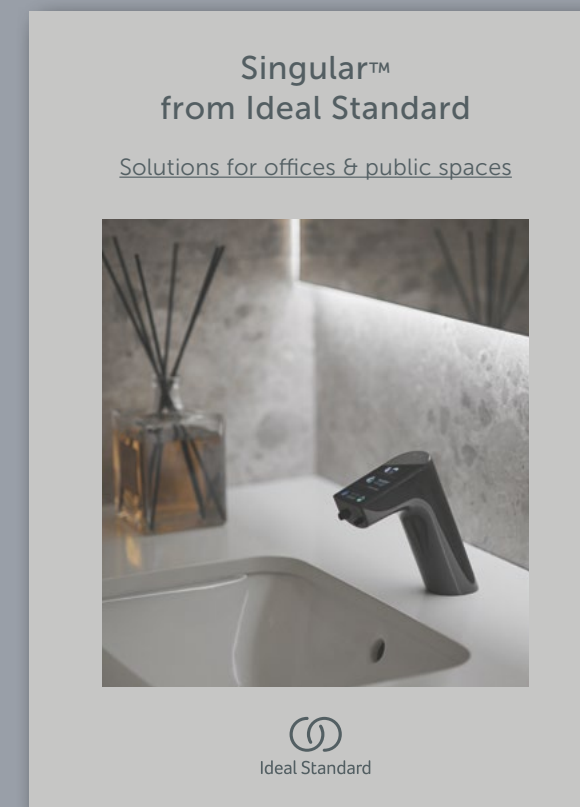
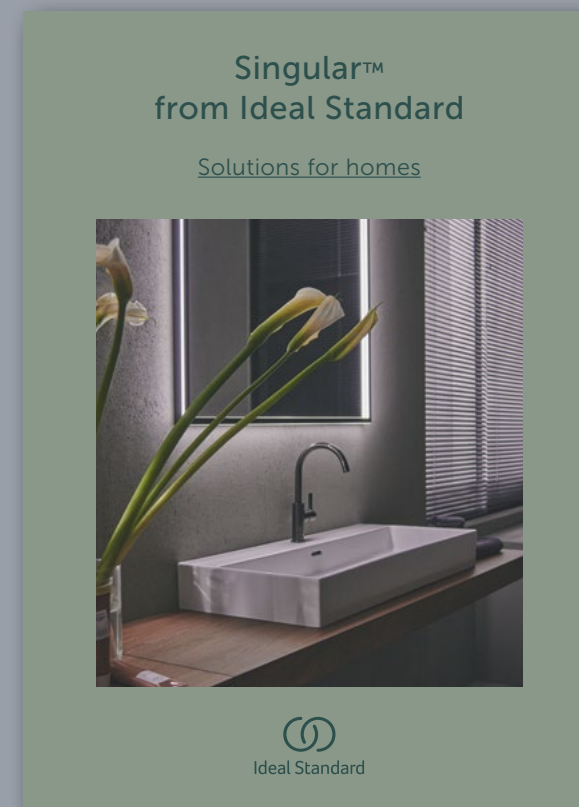
Easier still, just scan the QR code and you'll be taken directly to the registration page on IdealSpec.



If you'd prefer to read a printed copy, that's easy too – just scan the QR code above, which will open an email for you to provide your name and postal address details.



Sector book series



Ideal Standard is Singular™
The choice is yours.

Singular aims to offer a vast array of solutions from the Ideal Standard portfolio, so you can create your own. From homes to hospitals, we offer bathrooms and washrooms that meet every possible need.

Singular is more than just an idea. To illustrate Singular, we have developed a series of books where both inspiration and solutions come to life to offer endless possibilities and to present real project ideas. From taps to ceramics, from design to installation, Singular offers infinite solutions to architects, facilities managers and individuals thanks to Ideal Standard's and Armitage Shanks' highly experienced teams.

Our sector books present well-defined solutions with information on styles, dimensions, colour palettes, technical performance, and specific details for each sector. Every one is a guide to rely on.

Solutions for healthcare

Index

Introduction	
Designed to defend	page 12
Science first	page 14
The research behind our developments	page 16
Evolving threats	page 18
Two major risks to water systems	page 20
Healthcare innovations	
Markwik 21+ taps	page 22
SmartGuard+ glaze	page 32
Contour 21+ wash basins	page 34
Contour 21+ WCs	page 40
Contour grab rails and toilet seats	page 42
For the safest healthcare environment	page 44
Solutions for healthcare	
Public toilets (A&E)	page 48
Semi ambulant WC	page 56
Ambulant shower room	page 62
Independent wheelchair WC	page 66
Assisted WC	page 72
Assisted shower room	page 78
En suite	page 86
Independent wheelchair shower room	page 94
Clinical wash station	page 100
Private care bathroom	page 104
Stainless steel solutions	page 112

Designed to defend

Pathogenic bacteria evolve fast. Infection control specialists know that winning the fight against them demands microscopic attention to detail. This is why we design our products from the inside out.

We explore in depth how the materials they are made of can inhibit the growth of harmful bacteria. We examine how to manage the flow of water so bugs cannot grow or be transmitted easily. And we look closely at the structure of our fittings so they are easy to dismantle and disinfect.

Solutions from Armitage Shanks and Ideal Standard have been developed using this rigorous, scientific approach. They are the products of years of experience and research. For healthcare professionals, they represent a powerful new ally in the fight against infection.



Science first

Throughout our history, science has been the spur for our innovations in healthcare.

When we design new products, we work with experts to understand every aspect of the challenge.



From big picture to fine detail

The infection control environment is constantly changing. Only by understanding this 'big picture' is it possible to design effective methods for preventing the spread of pathogens. One of the most important messages from the science of infection control is that there is no single solution – the risks can only be minimised when products work well together.

The attention to this important detail is evident in our innovative product ranges. To take just one example, the patented Contour basin featuring Hydrofin technology is designed to work with the latest Markwik tap to significantly reduce splashing. These two products are designed to work in combination, ensuring they meet regulations and provide the highest levels of infection control.

Infection control: The 21st century battleground in healthcare

Bacteria are everywhere. Many are beneficial and pose little threat to a healthy individual. In a healthcare environment, however, this changes. Patients who are ill or recovering have compromised immune systems. That's why we've worked with healthcare professionals to identify where pathogenic bacteria are most likely to be transferred.

We designed clinical basins that minimise splashing and with back outlets that help reduce the risk of the aerosolisation of bacteria. We've also moved the trap and pipework to behind the panel, making for a more hygienic solution. And we've even done the same for deck mounted mixers, which are traditionally seen as too challenging.

Poor drainage within a basin itself or its pipework can lead to the growth of biofilm. So we've redesigned the shape of the basin so it drains more efficiently and the waste pipe behind the panel is vertical ensuring water is cleared instantly. We've also explored ways to reduce the amount of water left within the tap where bacteria might grow, by increasing the velocity of water running through it. We've also developed fittings that make it more difficult for bacteria to gain a foothold and we've cut down on the amount of plastics that bacteria might feed on.

The research behind our developments

Our partners

We have been working in partnership with leading scientists and specialists to develop our latest innovative healthcare solutions.

Research and Development

Our Wittlich factory in Germany has been at the forefront of product innovation in taps and fittings, developing the first ever ceramic disc cartridge in 1969. Today we have a dedicated team of product engineers across Germany and the UK, focused on product development.

Goodwin Hartshorn

Industrial designers at Goodwin Hartshorn helped us develop our revolutionary anti-splash Hydrofin for the Contour 21+ basin.

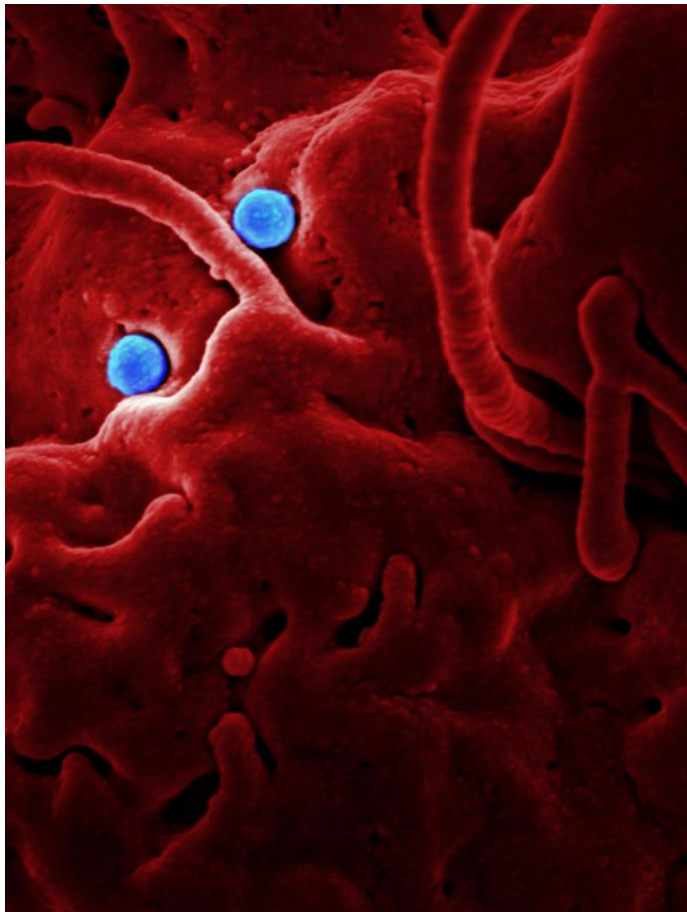
University research

We have has worked extensively with universities to increase our understanding of biofilm and bacteria growth.

Additionally, we analyse the data from our own tests and use these findings to guide the development of new products. Such tests include measuring the aerosol effects of WC flushing, the cleanability of WCs and testing new anti-splash technology.

Evolving threats

We constantly research the risks that water and sanitation systems can present in healthcare facilities. Recent findings confirm that more sophisticated solutions are needed to deal with the fast-changing threat environment.



The potential for water to be both a habitat and a delivery medium for harmful bacteria is well known. What we are discovering now is how tenacious and persistent certain pathogens can be, particularly in the way they develop biofilm. It's important for healthcare professionals to understand this and equip their facilities accordingly.

Biofilm

Bacteria excrete a layer called biofilm to protect their growth. This is a particular problem with *Pseudomonas aeruginosa*, which is both resistant to antibiotics and associated with serious illnesses. Biofilm can build up on surfaces and within appliances.

Bacteria build-up

Unless taps and mixers can be dismantled and autoclaved, they are at risk of long-term colonisation by pathogens and biofilm build-up.

Hidden surfaces

If fixtures are difficult to clean, bacteria can proliferate in areas that are hard to reach and hard to see, for example under a WC rim.

Back outlet basin

If drainage water remains in pipework immediately behind the basin there is an opportunity for harmful bacteria to grow.

Splashing

When water splashes out of basins when water is running, it can spread bacteria up to two metres away, potentially contaminating drug trays, clinical tools and patients themselves.

Stagnant or pooling water

If appliances are not used regularly there is a high risk of bacteria multiplying in pooling water. Even a day without use creates a risk of biofilm build-up. It can cost hospitals huge amounts of money in personnel and heating costs flushing taps and showers to prevent this.

Two major risks to water systems

Without appropriate design and technology features, water systems can be an ideal breeding ground and transmission medium for potentially harmful bacteria.



LEGIONELLA

These bacteria, which can cause Legionnaire’s disease, colonise water systems. Legionella proliferate at temperatures between 20°C and 45°C and careful system design and risk assessment is needed to manage this pathogen. Control measures include:

- Good overall maintenance and hygiene for water systems
- Appropriate temperatures: cold water should be delivered to the point of mixing below 20°C, and hot water above 55°C
- Cleaning of outlets, including autoclaving detachable spouts and dismantling taps for full disinfection
- Hot water should be stored at or over 60°C and hot and cold supplies should be kept separately
- In high-risk areas, fittings should have thermal disinfection capability and the use of medical filters should be considered



PSEUDOMONAS AERUGINOSA

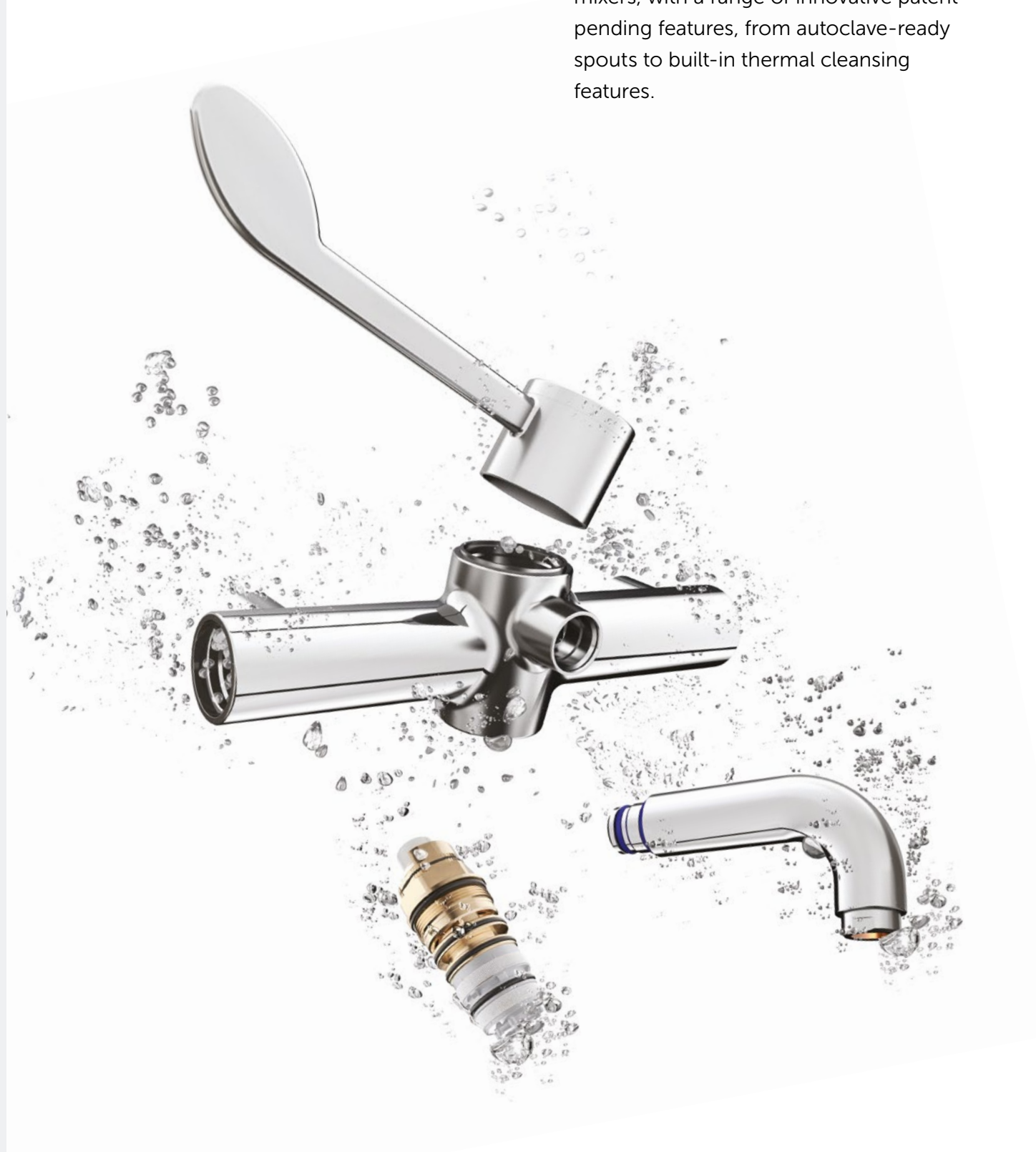
Pseudomonas aeruginosa is a common bacterium that is able to thrive on most surfaces. While healthy individuals can usually fight it off, immune-deficient or immunosuppressed people, can be vulnerable to Pseudomonas. This bacterium can thrive in water systems, especially the last two metres before the outlet, which means pipes, isolation valves, strainers and the tap itself can become contaminated. Protecting a facility against Pseudomonas needs a range of actions, which include:

- Regular checks of the water supply
- Frequent flushing of water systems
- Cleaning of outlets
- Infection control procedures where appropriate
- The use of medical filters in high-risk areas

Markwik 21+ Taps

Engineered to set new standards in hygiene.

Research-driven innovation has created a new healthcare standard for taps and mixers, with a range of innovative patent-pending features, from autoclave-ready spouts to built-in thermal cleansing features.



Autoclave-ready spouts

The Markwik 21+ detachable spout allows autoclave cleaning to prevent biofilm attachment and help reduce the risk of bacterial infection.

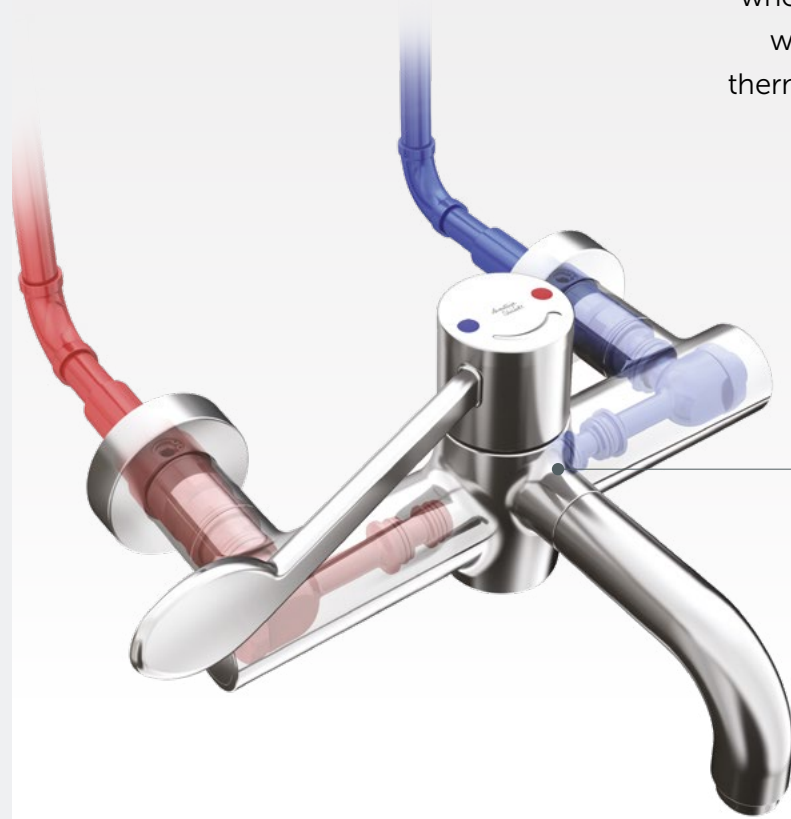
Submerge and disinfect

All Markwik 21+ mixers can be fully dismantled for disinfection, with internal components designed to withstand 80°C*, and detachable outlets are designed to withstand 135°C for autoclaving.

*Maximum inlet supply temperature during use is 65 degrees.

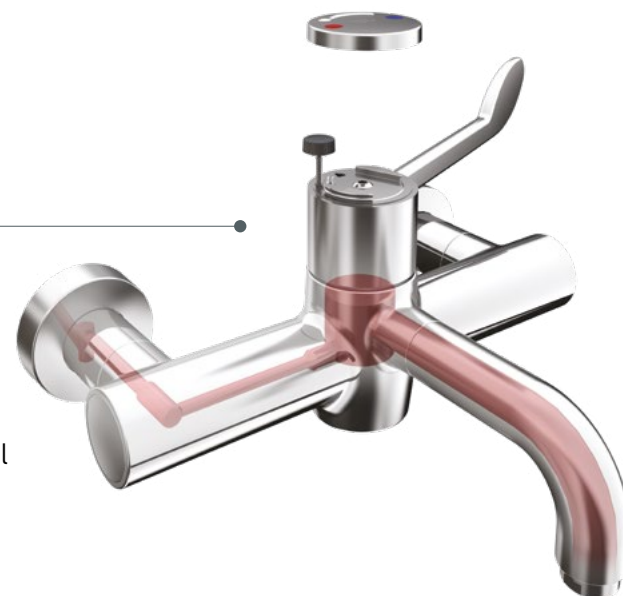
Minimal dead-legs

By mixing water closer to the point of discharge, Markwik 21+'s integral thermostat minimises 'dead leg' areas of warm water where bacteria can grow. This is compliant with HTM 04-01 Part A, which states that thermostatic mixing devices should be fitted directly to the outlet or integral with it.



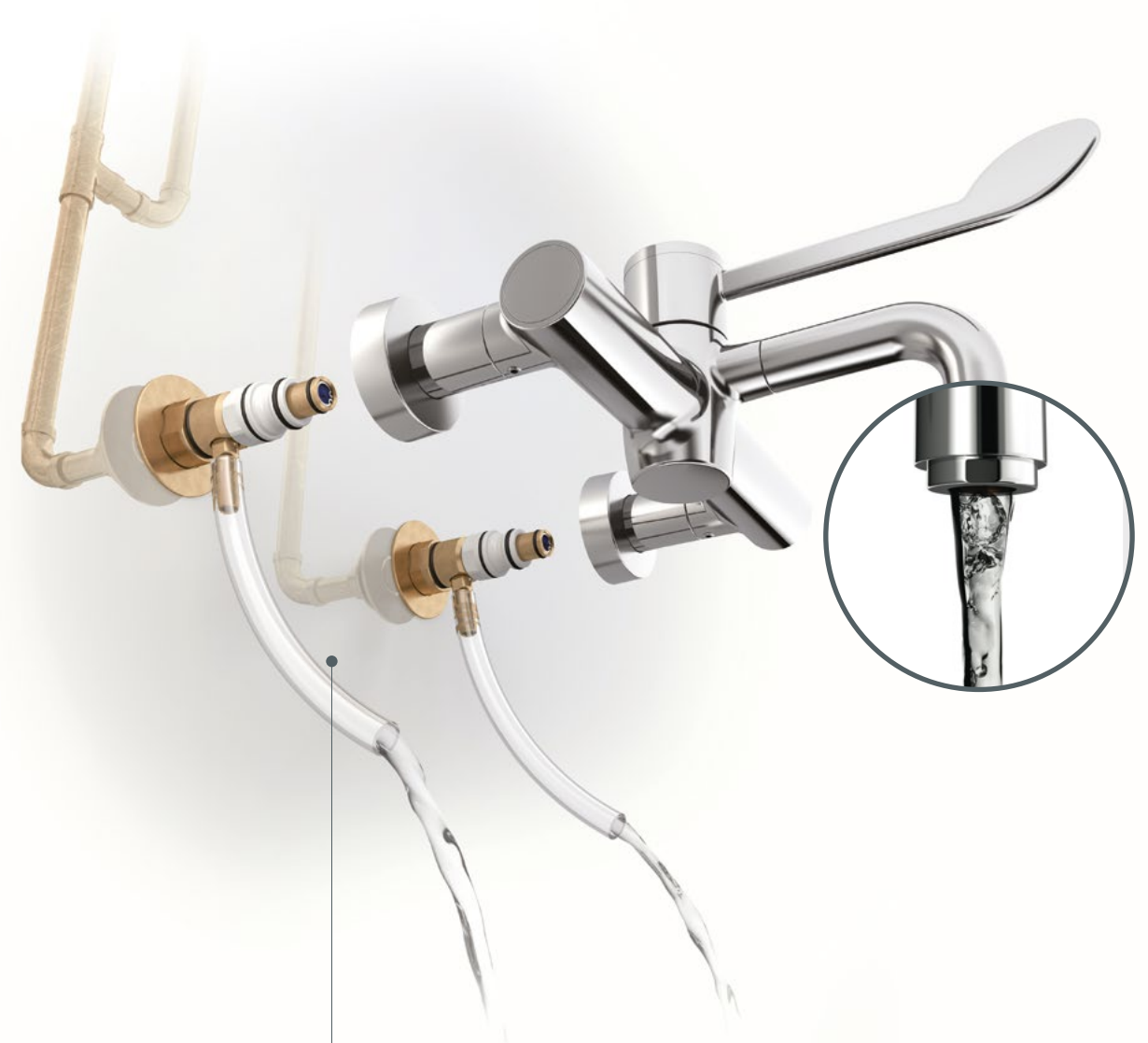
Thermal cleanse

Markwik 21+ mixers are designed for thermal cleansing and are equipped with a built-in thermal cleansing feature. This allows the maximum blend temperature stop to be overridden, using the hot water supply temperature in the system, for the most effective cleanse process possible.



Intelligent cleaning

Auto-flush technology ensures that Markwik 21+ mixers that are paired with electronic time-flow sensor controls are flushed through with water at least every 24 hours, helping to prevent the formation of bacteria.



Hydropurge

The Hydropurge system in Markwik 21+ mixers flushes any debris and waste that get into the system during installation, reducing the high risk of contamination when new facilities are opened. The same port can be used for inlet water sampling.



Antimicrobial outlets

Traditional outlets have flow straighteners that can become contaminated over time and provide a haven for harmful bacteria.

Markwik 21+ mixers feature BioGuard a patented copper lined outlet that helps prevent biofilm attachment and reduces the risk of pseudomonas infection.



The manual sequential lever option

The hands-free sensor option
(sensor position shown here for illustrative purposes only).



Hands-free hygiene

The sequential lever and time-flow sensor options both allow true hands-free operation.



Clean water on demand

All Markwik 21+ mixers are compatible with Pall Medical filters, so sterilising-grade water can be made available on demand.

Attention to detail

HTM 04-01 Part C notes that complex tap assemblies can be more prone to P. Aeruginosa colonisation. With a simplified design and the majority of polymers removed, Markwik 21+ holds a lower static water volume and has a minimised bio-footprint with fast cooling.

Water retained within a tap outlet can become heavily contaminated and in turn contaminate a high number of users.

Wash biofilm away

When water flows with more force and turbulence it helps to remove biofilm build-up. Markwik 21+ mixers feature small-bore antimicrobial pipes and a simplified design to promote this effect.

Maintaining safe touch attributes

Plastic components resist heat transfer to the mixer body.

MARKWIK 21+ has 52% less waterways*

MARKWIK 21+ has 34% lower static water volume*

MARKWIK 21+ is over 85% brass reducing the polymer content by 66%

Thermostatic cartridge

Thermostatic cartridge features a one-piece design for ease of changing and cleaning, and uses minimal plastics, reducing bacteria build-up compared with other designs.



Fewer polymers, more metal

To discourage bacteria, the Markwik 21+ cartridge is manufactured with more brass and less plastic. Where plastic is used, we have chosen grades that are less attractive to bacteria.

*Compared to previous Markwik models.

The first fully clinical deck tap

We are also bringing the advantages of clinical hand basin hygiene to general hospital areas – such as wheelchair-accessible toilets and patient en-suites – with the detachable Markwik 21+ thermostatic deck-mounted basin mixer.

In these areas, wall-mounted mixers may not be accessible, so a deck-mounted solution is needed. However, traditional deck mixers can be hard to clean and wash basins with exposed traps can be less hygienic.



Submerge and disinfect

All Markwik 21+ mixers can be fully dismantled for disinfection, with internal components designed to withstand 80°C*, and detachable outlets are designed to withstand 135°C for autoclaving.

*Maximum inlet supply temperature during use is 65 degrees.

The ultimate solution

The Markwik 21+ deck mixer and Contour 21+ basin combination is the first truly clinical deck mixer solution. The mixer is demountable for disinfection and maintenance, while the basin features a hidden trap behind a back outlet.



Handle design with thermal cleanse feature

Safe touch

Demountable body

Isolation valves for ease of maintenance

Integrated check valve flow regulators and strainers

Concealed trap and waste (which are more hygienic than exposed traps that are difficult to clean)

SmartGuard+

Engineered to protect.

The innovative SmartGuard+ glaze was specifically developed to provide our basins and toilet bowls with a built-in protection against a broad range of harmful microorganisms.

It contains ionic silver - an antimicrobial agent that is scientifically proven to inhibit the growth of a bacteria, fungi and certain viruses. Independent, regular testing procedures in accordance with ISO 22196 verify the efficiency of SmartGuard+ against Escherichia coli and Staphylococcus aureus, achieving a kill rate of 99% in 24 hours.

To further improve hygiene, the SmartGuard+ glaze features a smooth, glass like surface, making it more difficult for bacteria to grow and easier to keep clean.

99% antibacterial

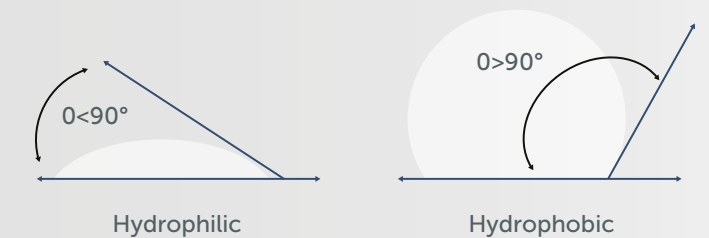
The effectiveness of SmartGuard+ antibacterial properties has been certified by independent testing to ISO 22196, achieving a kill rate of 99% in 24 hours.*

*Result of antibacterial surface test commissioned by Ideal Standard and conducted by Industrial Microbiological Services Ltd to international standard ISO 22196: 2011 which specifies a method of evaluating the antibacterial activity of antibacterial-treated products.



Hydrophilic properties increase effectiveness

SmartGuard+ has hydrophilic properties as it incorporates a very low contact angle with water. Effectively water is “pulled” into closer contact with the ceramic, increasing the surface area being activated by the silver ions and increasing the antimicrobial effect of the glaze, as well as promoting a route by which the water can get underneath the dirt – rather than passing over the top.



A smooth surface for easy cleaning

The uneven and almost textured appearance of standard glazes reduces the efficiency of water drainage from the surface and gives more opportunities for bacteria to grow. During the firing process, the additional thin surface layer on the SmartGuard+ flows freely and fills any microscopic indentations in the substrate, giving the glaze an extremely smooth, glass like finish.

Long-term protection

The antimicrobial is incorporated into the glaze ensuring the effects will last the lifetime of the product and provide protection even under the most intense usage conditions.

Contour 21+ Wash Basins

Engineered for infection control.

Our most advanced basin for healthcare yet, **Contour 21+** sets the standard for infection control.

Featuring a unique Hydrofin, it deflects water to reduce splashing by more than 90%, and thus the transfer of bacteria. Designed using fluid dynamics, it also improves drainage and reduces water retention. And on top of it all, our **SmartGuard+** anti-microbial hydrophilic glaze makes it harder for bacteria to adhere to its surface.

High-tech hygienic surface

Our healthcare ceramics use an extra-smooth hydrophilic glaze – **SmartGuard+** – making it easier for water to drain off and harder for bacteria to adhere.

Anti-splash design

The Contour 21+ basin features our patented Hydrofin to significantly reduce splashing.

Better drainage

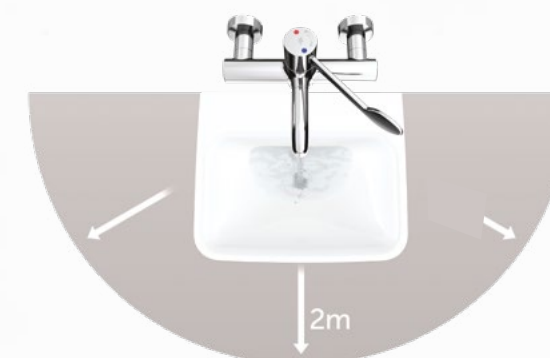
Developed from CFD experts at Sheffield Hallam University, Contour 21+ features a design that improves flow and reduces water retention.



Our Contour 21+ basin cuts splashing by over 90%*

Standard hospital basin risks

Our research shows that with standard hospital basins, running water can splash onto surrounding floors and surfaces. These splashes have been measured up to two metres away from the basin, potentially falling on beds, clothing and hospital equipment.



Unique fin design

It's important that washing facilities reduce opportunities for the transfer of bacteria within basins. That's why the Contour 21+ range incorporates our unique Hydrofin which is moulded into the ceramic and cuts splashing by over 90%.



Reduced splash

The Hydrofin design, in combination with the larger surface area of the basin, means that water hits at a shallower angle and its splash is deflected to either side of the basin. It is fully effective when paired with the Markwik 21+ mixer.

*splash reduction recorded during development testing

Better drainage

Water systems are complex. Successful infection control depends on a close examination of every potential opportunity for harmful bacteria to grow and spread. We've combined the latest medical knowledge, materials, science and design techniques to produce a range of innovations that help create safer healthcare environments.



Less to clean

Basin design features a smaller back area to reduce the surface area that needs cleaning. The larger bowl area helps contain splashes.

Better flow

Some non-harmful bacteria help transfer genetic material, which in turn allows disease-causing bacteria to acquire resistance genes. That's why we created angles within the basin design to improve water flow and drainage. Thinner, more angular rims also aid drainage and prevent standing water.

Easier to install

Fixings are made of stainless steel for chemical resistance and anti-corrosion. The simplified "click to fit" attachments and the orientation waste mean installation can be carried out by one person.



Efficient trap design

An anti-syphon valve in the Contour 21+ trap prevents negative pressure from breaking the water seal and stops foul air coming up through the waste.

Simplified waste

Waste and connection pipe allows for fast drainage of water, debris and organic material.

Rimless design

The rimless design of Contour 21+ WCs eliminates a potential breeding ground for bacteria whilst making the units easier and quicker to clean.

Longer outlet pipe

A longer outlet pipe on extended bowl models simplifies installation and the inspection of water connection joints. The dual floor fixings on back-to-wall WCs ensure greater stability of the pan.

Improved drainage

Contour 21+ standard projection back-to-wall bowls have a higher outlet pipe of 225mm, helping to improve drain carry.

Contour 21+ WCs

Engineered for superior hygiene.

Featuring a rimless design and antimicrobial surfaces, our Contour 21+ toilets help create the most hygienic healthcare environments possible.

A cleaner view

The injector slot and increased visible space within the bowl make it easier to see where cleaning is needed.

Improved flush

Contour 21+ is designed so that water is channelled over more of the bowl, helping to keep it cleaner.

Antibacterial coating

The SmartGuard+ glaze prevents bacteria build-up and reduces the opportunity for them to take hold.





- Durable toilet seats with seat retainers and stainless steel hinges give the feeling of quality, strength and stability and ensure that the seat doesn't move during use or lateral transfer from a wheelchair.

- Seats are made from urea, a naturally hygienic, non porous material with a high quality feel and appearance.

Contour 21 Toilet seats and grab rails

- Grab rails are made from 33mm polyester-coated aluminium (except stainless steel and chrome rails), and are available in a variety of colours to provide contrast for the visually impaired: white, blue, grey, charcoal, black, or stainless steel.

- Both, our toilet seats and grab rails, will not be damaged during hydrogen peroxide vapour cleansing.

- The robust hinged arm support that folds up out of the way is capable of supporting 200kg. Grab rails also feature concealed fixings for added hygiene.



For the safest healthcare environment

Our solutions help specifiers and infection control professionals to create clinical sanitary facilities with the highest levels of protection against healthcare-acquired infections.

Fully compliant

Our sanitaryware ensures your facilities comply with the latest performance requirements for infection control, environmental performance and disabled access.

HBN 00-02	Sanitary Spaces	Guidance on designing bathrooms, shower rooms, changing areas and WCs in healthcare settings
HTM 04-01 PART A	Safe water in healthcare premises Part A: Design, installation and commissioning	This current review and update of HTM 04-01 is intended to move users of the document towards a holistic management of water systems via Water Safety Groups (WSGs), Water Safety Plans (WSPs) and other initiatives
HBN 00-09	Infection control in the built environment	This guidance, aimed at all providers of NHS care, discusses the various stages of a capital build project from initial concept to post-project evaluation. It highlights the major infection prevention and control (IPC) issues and risks to address at each particular stage to achieve designed-in IPC
HBN 00-10 PART C	Sanitary Assemblies	Guidance in sanitary assemblies for England, Wales and Northern Ireland
HTM64	Sanitary Assemblies	Guidance in sanitary assemblies for Scotland

Designed for sustainability

From the way they are manufactured to their performance in use, our products are designed to reduce environmental impacts, help you meet sustainability goals and achieve high BREEAM and LEED scores.

- **Efficient manufacturing.** We recycle around 70% of our ceramic waste. More than half of it is reused in our own production processes, while the rest is distributed to companies manufacturing ceramic tiles and waste pipes. We also recycle 100% of our brass waste material.
- **Greener packaging.** In 2019, we converted to 75% recycled plastic pallet bags in most of our warehouse operations. We also removed all shrink wrap from our ceramic products. By 2025, we will remove all single use plastics from our packaging.
- **Less water.** We design our products to use the optimum amount of water and eliminate unnecessary waste. Many of our WCs flush on low dual flush water volumes and mixers and taps are regulated. Our sensor mixers stop water flow after a preset time to reduce water use.

Built to last

Our collections are manufactured to stand up to the rigorous cleaning regimes in healthcare facilities. All sanitaryware is finished in a high performance glaze for long life and colour retention.

Our products offer long guarantees:



On all ceramic products *.



On taps, mixers, toilet seats, stainless steel, solid surface materials and cistern fittings *.

All mixers use seals that prevent damage by commercial cleaning products.

Low maintenance

Minimising downtime is essential, so ease of cleaning and servicing is at the heart of our design philosophy. The organic designs of our ceramic ranges allow for faster and effective cleaning while **Marwik 21+** mixers can be easily serviced, or dismantled for autoclaving. Panel-mounted mixers can be serviced from the front, with no need to remove wall panels.

* For specific details visit: www.idealspec.co.uk/support/guarantee.html



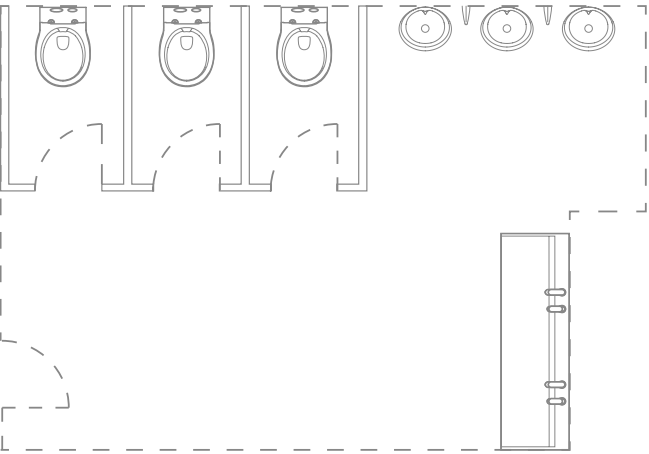
Solutions for healthcare

We understand that every project is unique but also that your specification will be largely driven by healthcare standards and technical notes. Using our Singular™ philosophy, we have designed a range of compliant solutions for different room types and patient needs to make specifying your new build or refurbishment quicker, simpler and, above all, safer.

Reliability and durability combined

Washrooms in busy accident and emergency departments require robustness and durability. With ceramics guaranteed for the lifetime of the product and taps for five years, you can rest assured that Armitage Shanks is the right choice to meet these demands.

In addition to their long-lasting build quality, our Edit trough and Sensorflow 21 tap reduce cleaning and improve hygiene, with touch-free water flow and fast drainage through the bottom outlet.



Where it all comes together.



Public Toilets (A&E)

EDIT



Washtrough
Code S121301

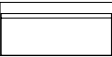
180cm 3 person
washtrough with waste

Made from solid surface
material

120



180



240



Finishes:

☐ 01 Glossy White

Versions:

2, 3 or 4 person
troughs

SENSORFLOW 21



Compact deck spout
Code A4852AA

Hygienic "no touch"
operation

Anti-vandal outlet

Water-saving 3.7 litres
per minute aerated spray
outlet

Finishes:

☒ AA Chrome

☐ GN Brushed Steel

Versions:

Washbasin or panel
mounted models
available, battery or
mains operated

CONTOUR 21



**Angular deck
mounted soap
dispenser**
Code A9210AA

Simple press operation

Excellent durability

Adjustable soap volume

Easy to clean

Finishes:

☒ AA Chrome

☐ GN Brushed Steel

Versions:

Panel mounted,
angular or upright
deck mounted
models available



SENSORFLOW 21
Compact deck spout

CONTOUR 21
Soap dispenser

▲
EDIT
Washtrough



Public Toilets (A&E)

CONTOUR 21+



Back-to-wall toilet
Code S0439HY

Rimless technology
Raised outlet for multiple
installations
Standard projection

Finishes:

○ HY Glossy White
with SmartGuard+

Technology:

SmartGuard⁺
99% antibacterial and easy
to clean

CONTOUR 21



**Toilet seat with
retaining buffers
- no cover**
Code S4066LJ

WC seat without lid in
range of contrasting
colours
Seat retainers keep seat
secure when transferring
to WC

Finishes:

○ 01 White
● LJ Grey
● 36 Blue
● RN Charcoal

SENSORFLOW 21



**Electronic flushing
device & cistern**
Code S359967

Panel mounted sensor
complete with concealed
valve and 4 or 4.5 litre
duct cistern
Touch-less activation

Public Toilets (A&E)

CONTOUR



HygenIQ urinal
Code S611901

Conforms to HBN 00-10
HTM64 (UR H)
Concealed trap
Splash reducing design
67cm height
Urinal waste to be ordered
separately (Code S884967)

Finishes:
☐ 01 Glossy White

ACCESSORIES



Trap
Code S897067

1½" plastic P with 75mm
seal
Multi-purpose outlet
suitable for plastic and BS
copper pipe

SANURA



**Back inlet urinal
spreader**
Code S6286AA

Finishes:
☒ AA Chrome

Urinal toggle bolts
Code S927667

Toggle bolts to suit
maximum 25mm panel
thickness



**Urinal division with
hanger & screw**
Code S612001

Finishes:
☐ 01 Glossy White



Urinal hangers
Code S927567

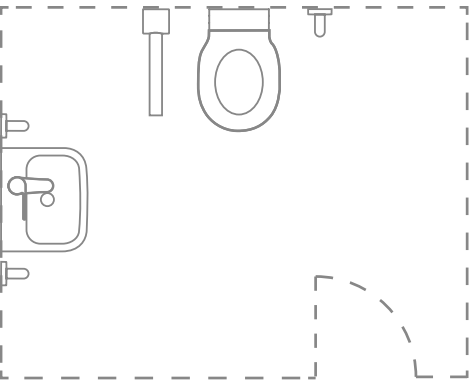
Pair of concealed wall
hangers



Supporting independence, maintaining compliance

Our recommended specification for a semi-ambulant toilet meets the stipulations HBN 00-10 Part C and HBN 00-02, covering sanitary assemblies and sanitary spaces. The raised height Contour 21+ toilet improves accessibility and comfort for users while providing robustness and durability.

The Contour 21+ basin features a concealed trap and waste for better hygiene while the Markwik 21+ mixer tap can be fully dismantled for disinfection and easier, more effective cleansing. Grab rails and hinged support arms offer greater mobility and are available in a range of colours to help visually impaired people.



Where it all comes together.



Semi Ambulant WC

CONTOUR 21+



40cm back outlet basin
Code S0435HY

Conforms to HBN 00-10
HTM64 (LB G S)

One right hand tap hole

Easy fixation

Concealed back outlet
with antimicrobial
properties

Designed for ducted panel
services

40



50



Finishes:

- HY Glossy White
with SmartGuard+

Technology:

SmartGuard+

99% antibacterial and easy
to clean

Versions:

- 40cm LH taphole - Code S0433HY
- 50cm RH taphole - Code S0432HY
- 50cm LH taphole - Code S0431HY

MARKWIK 21+



Thermostatic basin mixer
Code A6696AA

Conforms to HTM 04-01
and HBN 00-10

Single sequential lever

Demountable with copper
tails

Top access D-08 auditing
& servicing

Demountable

BioGuard outlet

Thermal cleanse feature

Detachable spout for easy
sterilisation

Finishes:

- AA Chrome



Deck mounted basin mixer fixing kit
Code A6791NU

Fixing kit for Markwik
21+ mixer A6696 when
used with Contour 21+
back outlet basins.

CONTOUR 21



Grab rail
Code S6454RN

60cm

Available in range of
contrasting colours

Finishes:

- AC White
- LJ Grey
- 36 Blue
- RN Charcoal
- XG Black
- MY Stainless Steel



CONTOUR 21 Grab rail

MARKWIK 21+ Basin mixer

CONTOUR 21+ Basin



Semi Ambulant WC

CONTOUR 21+



Raised height back-to-wall toilet
Code S0440HY

Conforms to HBN 00-10 HTM64 (WC H)
Rimless technology
Raised outlet for multiple installations
Standard projection

Finishes:

- HY Glossy White with SmartGuard+

Technology:

SmartGuard+

99% antibacterial and easy to clean

ProSys® Technology



ProSys® WC cistern 120P
Code R031867

CONTOUR 21



Toilet seat with retaining buffers - no cover
Code S4066RN

WC seat without lid in range of contrasting colours
Seat retainers keep seat secure when transferring to WC

Finishes:

- 01 White
- LJ Grey
- 36 Blue
- RN Charcoal



Hinged support rail
Code S6361RN

65cm
Available in range of contrasting colours - NHS HTM64



Toilet roll holder
Code S6363RN

For hinged support rail

Finishes:

- AC White
- LJ Grey
- 36 Blue
- RN Charcoal
- MY Stainless Steel

SEPTA PRO P4



Pneumatic dual flush plate
Code R0136AA

Raised adjustable buttons
Dual flush
Pneumatic actuation
Vandal resistant

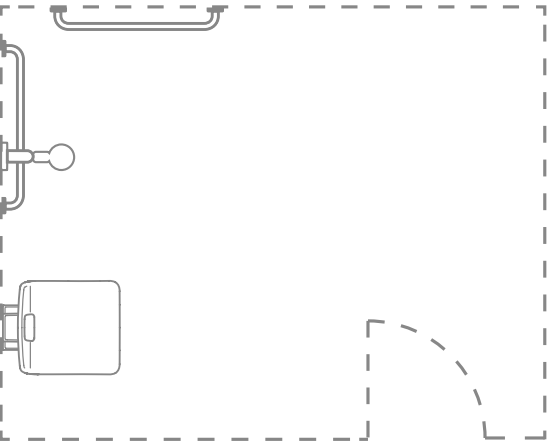
Finishes:

- AA Chrome

For a safer shower experience

Showering by Armitage Shanks removes the risk of scalding and helps to reduce the possibility of slips and trips. Our Contour 21 built-in thermostatic shower ensures water temperatures do not go beyond safe levels, with a sequential valve for one-handed operation.

The anti-slip folding seat offers greater safety for users and the robust grab rails provide them with greater mobility. Featuring concealed fixings for added hygiene, they are manufactured to withstand hydrogen peroxide vapour cleansing without damage and are available in a range of colours to provide contrast for visually impaired users.



Where it all comes together.



CONTOUR 21
Grab rail

ARMAGLIDE 2
Shower set

CONTOUR 21
Built-in thermostatic
sequential shower mixer

CONTOUR 21
Changing seat

CONTOUR 21
Grab rail



◀ ARMAGLIDE 2
Shower set

CONTOUR 21
Built-in thermostatic
sequential shower mixer
▼

▲
CONTOUR 21
Grab rail

Ambulant shower room

CONTOUR 21



**Built in thermostatic
sequential shower
mixer**
Code A4129AA

Sequential shower valve
Extended easy use lever
Automatic safety shut off



Changing seat
Code S1207XK



Grab rail
Code S6454LJ

60cm
Available in range of
contrasting colours

Finishes:

- AC White
- LJ Grey
- 36 Blue
- RN Charcoal
- XG Black
- MY Stainless Steel



Handset holder
Code S6477LJ

Finishes:

- AC White
- LJ Grey
- 36 Blue
- RN Charcoal
- MY Stainless Steel

ARMAGLIDE 2



Shower set
Code B9308AA

Single function hand spray
1.75m smooth hose
8 litre per minute flow
restrictor
Category 5 hose retainer

ACCESSORIES



Wall elbow
Code E4705AA

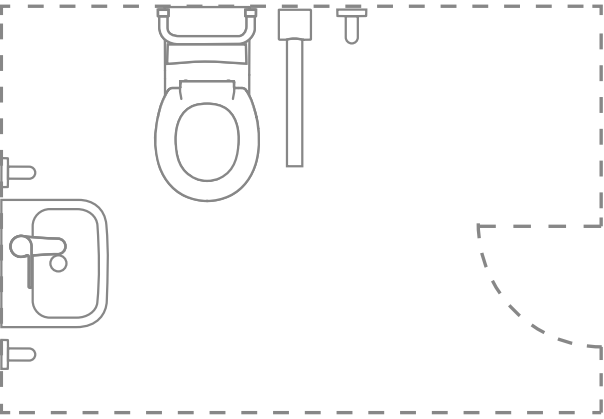
Shower curtain rail
Code S6751AC

Shower curtain
Code S675001

Longer projection, greater comfort

The Contour 21+ raised height WC enables users with limited mobility to access facilities in more comfort, assisted by grab rails and support which are available in a range of colours to support people with visual impairments.

Contour 21+ basins feature a new back outlet compact waste system and an anti-microbial treatment for improved infection prevention and control, a benefit shared with the Markwik 21+ basin mixer, which can be easily disassembled for better cleansing.



Where it all comes together.



CONTOUR 21
Grab rail

CONCEALA
Spatula lever

CONTOUR 21
Back rest cushion

CONTOUR 21
Toilet seat

CONTOUR 21
Hinged support rail

CONTOUR 21+
Raised height WC



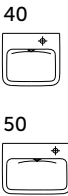
Independent Wheelchair WC

CONTOUR 21+



40cm back outlet basin mixer
Code S0435HY

Conforms to HBN 00-10 HTM64 (LB G S)
One right hand tap hole
Easy fixation
Concealed back outlet with antimicrobial properties
Designed for ducted panel services



Finishes:
○ HY Glossy White with SmartGuard+

Technology:
SmartGuard[®]
99% antibacterial and easy to clean

Versions:
40cm LH taphole - Code S0433HY
50cm RH taphole - Code S0432HY
50cm LH taphole - Code S0431HY

MARKWIK 21+



Thermostatic basin mixer
Code A6696AA

Conforms to HTM 04-01 and HBN 00-10
Single sequential lever
Demountable with copper tails
Top access D-08 auditing & servicing
Demountable
BioGuard outlet
Thermal cleanse feature
Detachable spout for easy sterilisation

Finishes:
● AA Chrome



Deck mounted basin mixer fixing kit
Code A6791NU

Fixing kit for Markwik 21+ mixer A6696 when used with Contour 21+ back outlet basins.

CONTOUR 21



Grab rail
Code S6454LJ

60cm
Available in range of contrasting colours

Finishes:
○ AC White
● LJ Grey
● 36 Blue
● RN Charcoal
● XG Black
● MY Stainless Steel

Independent Wheelchair WC

CONTOUR 21+



Back-to-wall toilet
Code S0437HY

Conforms to HBN 00-10
HTM64 (WC HD)
Rimless technology
70cm projection
Raised height

Finishes:

- HY Glossy White
with SmartGuard+

Technology:

SmartGuard+
99% antibacterial and easy
to clean

CONCEALA 2



Concealed cistern
with syphon, side
inlet
Code S362067

CONTOUR 21



Toilet seat with
retaining buffers - no
cover
Code S4066LJ

WC seat without lid in
range of contrasting
colours
Seat retainers keep seat
secure when transferring
to WC

Finishes:

- 01 White
- LJ Grey
- 36 Blue
- RN Charcoal



Back rest rail
Code S6481LJ



Hinged support rail
Code S6361LJ

65cm
Available in range of
contrasting colours -
NHS HTM64

Finishes:

- AC White
- LJ Grey
- 36 Blue
- RN Charcoal
- MY Stainless Steel



Cushion for back
support with clips
Code S688467



Toilet roll holder
Code S6363LJ

For hinged support rail

Finishes:

- AC White
- LJ Grey
- 36 Blue
- RN Charcoal
- MY Stainless Steel

CONCEALA



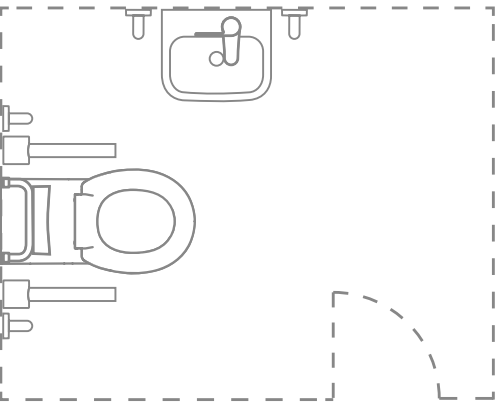
Spatula lever
Code S4516AA



Accessibility for all users

Our assisted WC recommended specification, features hinged support rails and grab rails to help patients use the facilities. This is supported with a 70cm extended projection Contour 21+ toilet, designed for greater accessibility by wheelchair users.

A back rest cushion improves user comfort while the spatula lever makes flushing easier than conventional handles and push buttons. Intelligent design means a toilet roll holder can be integrated into the hinged support rails.



Where it all comes together.



Assisted WC

CONTOUR 21+



40cm back outlet basin
Code S0435HY

Conforms to HBN 00-10
HTM64 (LB G S)

One right hand tap hole

Easy fixation

Concealed back outlet
with antimicrobial
properties

Designed for ducted panel
services

40



50



Finishes:

- HY Glossy White
with SmartGuard+

Technology:

SmartGuard*

99% antibacterial and easy
to clean

Versions:

40cm LH taphole - Code S0433HY
50cm RH taphole - Code S0432HY
50cm LH taphole - Code S0431HY

MARKWIK 21+



Thermostatic basin mixer
Code A6696AA

Conforms to HTM 04-01
and HBN 00-10

Single sequential lever

Demountable with copper
tails

Top access D-08 auditing
& servicing

Demountable

BioGuard outlet

Thermal cleanse feature

Detachable spout for easy
sterilisation

Finishes:

- AA Chrome



Deck mounted basin mixer fixing kit
Code A6791NU

Fixing kit for Markwik
21+ mixer A6696 when
used with Contour 21+
back outlet basins.

CONTOUR 21



Grab rail
Code S645436

60cm

Available in range of
contrasting colours

Finishes:

- AC White
- LJ Grey
- 36 Blue
- RN Charcoal
- XG Black
- MY Stainless Steel

OPTION: PORTMAN 21



50cm washbasin
Code S225401

No overflow

1 R/H taphole

1 L/H taphole - S230801





Assisted WC

CONTOUR 21+



Wall-hung toilet
 Code S3077HY

Conforms to HBN 00-10
 HTM64 (WC HD)
 Rimless technology
 70cm projection

Finishes:

- HY Glossy White with SmartGuard+

Technology:

SmartGuard⁺
 99% antibacterial and easy to clean

CONCEALA 2



Concealed cistern with syphon, side inlet
 Code S362067

CONTOUR 21



Toilet seat with retaining buffers - no cover
 Code S406636

WC seat without lid in range of contrasting colours

Seat retainers keep seat secure when transferring to WC

Finishes:

- 01 White
- LJ Grey
- 36 Blue
- RN Charcoal

CONCEALA



Spatula lever
 Code S4516AA



Back rest rail
 Code S648136



Hinged support rail
 Code S636136

65cm
 Available in range of contrasting colours - NHS HTM64

Finishes:

- AC White
- LJ Grey
- 36 Blue
- RN Charcoal
- MY Stainless Steel



Cushion for back support with clips
 Code S688467



Toilet roll holder
 Code S636336

For hinged support rail

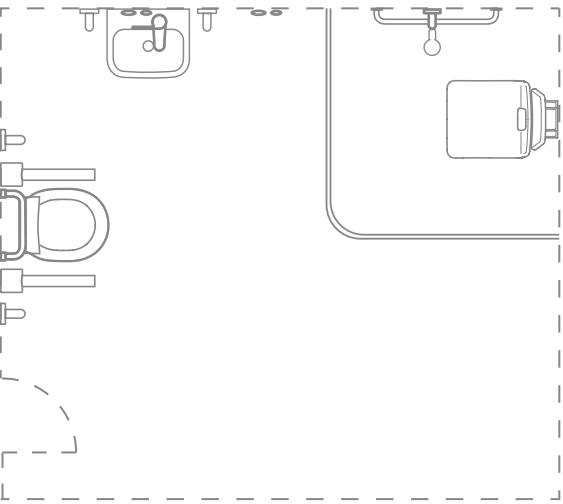
Finishes:

- AC White
- LJ Grey
- 36 Blue
- RN Charcoal
- MY Stainless Steel

Making showers accessible to all

Assisted shower rooms demand bathroom products which are designed with safety and durability as priorities. The Contour 21+ thermostatic valve ensures the prevention of scalding while a diverter allows switching between a standard handset and a high-mounted anti-vandal shower spray.

This suggested specification also features a wide range of support and grab rails, as well as a non-slip seat, to improve independence for users.



Where it all comes together.



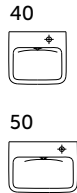
Assisted shower room

CONTOUR 21+



50cm back outlet basin
Code S0432HY

- Conforms to HBN 00-10 HTM64 (LB G S)
- One right hand tap hole
- Easy fixation
- Concealed back outlet with antimicrobial properties
- Designed for ducted panel services



- Finishes:**
- HY Glossy White with SmartGuard+

- Technology:**
- SmartGuard**+
- 99% antibacterial and easy to clean

- Versions:**
- 40cm RH taphole - Code S0435HY
 - 40cm LH taphole - Code S0433HY
 - 50cm LH taphole - Code S0431HY

MARKWIK 21+



Thermostatic basin mixer
Code A6696AA

- Conforms to HTM 04-01 and HBN 00-10
- Single sequential lever
- Demountable with copper tails
- Top access D-08 auditing & servicing
- Demountable
- BioGuard outlet
- Thermal cleanse feature
- Detachable spout for easy sterilisation

- Finishes:**
- AA Chrome



Deck mounted basin mixer fixing kit
Code A6791NU

- Fixing kit for Markwik 21+ mixer A6696 when used with Contour 21+ back outlet basins.

CONTOUR 21



Grab rail
Code S6454RN

- 60cm
- Available in range of contrasting colours

- Finishes:**
- AC White
 - LJ Grey
 - 36 Blue
 - RN Charcoal
 - XG Black
 - MY Stainless Steel

OPTION: PORTMAN 21



50cm washbasin
Code S225401

- No overflow
- 1 R/H taphole
- 1 L/H taphole - S230801



Assisted shower room



CONCEALA
Spatula lever

CONTOUR 21
Back rest rail and cushion

CONTOUR 21
Hinged support rail

CONTOUR 21
Toilet seat

CONTOUR 21+
Wall-hung toilet

CONTOUR 21+



Wall-hung toilet
Code S3077HY

Conforms to HBN 00-10
HTM64 (WC HD)
Rimless technology
70cm projection

Finishes:

- HY Glossy White
with SmartGuard+

Technology:

SmartGuard*
99% antibacterial and easy
to clean

CONCEALA 2



Concealed cistern
with syphon, side
inlet
Code S362067

CONTOUR 21



Toilet seat with
retaining buffers -
no cover
Code S4066RN

WC seat without lid in
range of contrasting
colours
Seat retainers keep seat
secure when transferring
to WC

Finishes:

- 01 White
- LJ Grey
- 36 Blue
- RN Charcoal



Cushion for back
support with clips
Code S688467

CONCEALA



Spatula lever
Code S4516AA



Back rest rail
Code S6481RN



Hinged support rail
Code S6361RN

65cm
Available in range of
contrasting colours -
NHS HTM64



Toilet roll holder
Code S6363RN

For hinged support rail

Finishes:

- AC White
- LJ Grey
- 36 Blue
- RN Charcoal
- MY Stainless Steel



Assisted shower room

CONTOUR 21



Built in thermostatic sequential shower mixer
Code A4129AA

Sequential shower valve
Extended easy use lever
Automatic safety shut off



Fixed shower head
Code S9313AA



Shower diverter
Code L6919AA



Wall elbow
Code E4705AA

Finishes:

AA Chrome



Grab rail
Code S6454RN

60cm

Available in range of contrasting colours

Finishes:

AC White
LJ Grey
36 Blue
RN Charcoal
XG Black
MY Stainless Steel



Handset holder
Code S6477RN

Finishes:

AC White
LJ Grey
36 Blue
RN Charcoal
MY Stainless Steel



Shower seat
Code S1207XK

Folding

Fixed height with 650mm projection

DDA compliant



Shower back rest
Code S1208XK

Finishes:

XK Grey

Shower curtain rail
Code S6751AC

Angled shower curtain rail
1200 x 1200mm

Shower curtain
Code S675001

1500 x 2000mm

Finishes:

01 White

ARMAGLIDE 2



Shower set
Code B9308AA

Single function hand spray

1.75m smooth hose

8 litre per minute flow restrictor

Category 5 hose retainer

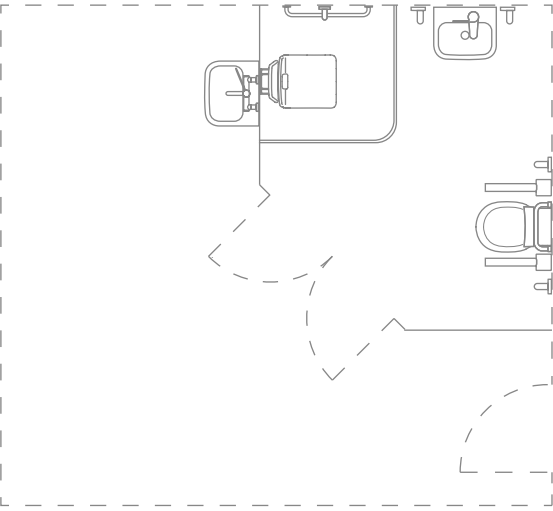
Finishes:

AA Chrome

Safety and convenience

The specification of en suites is governed by the requirements of HBN 00-10 Part C and HBN 00-02, covering sanitary assemblies and sanitary spaces. The raised height Contour 21+ toilet is strong and durable whilst also improving accessibility and comfort for users.

Grab rails and hinged support arms offer greater mobility and are available in a range of colours to help visually impaired people. The Contour 21+ basin features a concealed trap and waste for better hygiene while the Markwik 21+ mixer tap can be fully dismantled for disinfection and easier, more effective cleansing.



Where it all comes together.





En suite

CONTOUR 21+



50cm back outlet basin
Code S0432HY

Conforms to HBN 00-10
HTM64 (LB G S)

One right hand tap hole

Easy fixation

Concealed back outlet
with antimicrobial
properties

Designed for ducted panel
services



Finishes:

○ HY Glossy White
with SmartGuard+

Technology:

SmartGuard⁺

99% antibacterial and easy
to clean

Versions:

40cm RH taphole - Code S0435HY
40cm LH taphole - Code S0433HY
50cm LH taphole - Code S0431HY

MARKWIK 21+



Thermostatic basin mixer
Code A6696AA

Conforms to HTM 04-01
and HBN 00-10

Single sequential lever

Demountable with copper
tails

Top access D-08 auditing
& servicing

Demountable

BioGuard outlet

Thermal cleanse feature

Detachable spout for easy
sterilisation

Finishes:

● AA Chrome



Deck mounted basin mixer fixing kit
Code A6791NU

Fixing kit for Markwik
21+ mixer A6696 when
used with Contour 21+
back outlet basins.

CONTOUR 21



Grab rail
Code S6454LJ

60cm

Available in range of
contrasting colours

Finishes:

○ AC White

● LJ Grey

● 36 Blue

● RN Charcoal

● XG Black

● MY Stainless Steel

OPTION: PORTMAN 21



50cm washbasin
Code S225401

No overflow

1 R/H taphole

1 L/H taphole - S230801

En suite

CONTOUR 21+



Raised height back-to-wall toilet
Code S0437HY

Conforms to HBN 00-10
HTM64 (WC HD)

Rimless technology

70cm projection

Finishes:

- HY Glossy White with SmartGuard+

Technology:

(SmartGuard)*

99% antibacterial and easy to clean

CONCEALA 2



Concealed cistern with syphon, side inlet
Code S362067

CONTOUR 21



Toilet seat with retaining buffers - no cover
Code S4066LJ

WC seat without lid in range of contrasting colours

Seat retainers keep seat secure when transferring to WC

Finishes:

- 01 White
- LJ Grey
- 36 Blue
- RN Charcoal



Grab rail for back support cushion
Code S6481LJ



Hinged support rail
Code S6361LJ

65cm

Available in range of contrasting colours - NHS HTM64

Finishes:

- AC White
- LJ Grey
- 36 Blue
- RN Charcoal
- MY Stainless Steel



Cushion for back support with clips
Code S688467



Toilet roll holder
Code S6363LJ

For hinged support rail

Finishes:

- AC White
- LJ Grey
- 36 Blue
- RN Charcoal
- MY Stainless Steel

CONCEALA



Spatula lever
Code S4516AA





ARMAGLIDE 2
Shower set

CONTOUR 21
Built-in thermostatic
sequential shower mixer

CONTOUR 21
Shower back rest

CONTOUR 21
Grab rail

CONTOUR 21
Shower curtain

CONTOUR 21
Shower seat

En suite

CONTOUR 21



**Built in thermostatic
sequential shower
mixer**
Code A4129AA

Sequential shower valve
Extended easy use lever
Automatic safety shut off



Wall elbow
Code E4705AA

Finishes:
● AA Chrome



Grab rail
Code S6454LJ

60cm
Available in range of
contrasting colours

Finishes:
○ AC White
● LJ Grey
● 36 Blue
● RN Charcoal
● XG Black
● MY Stainless Steel



Handset holder
Code S6477LJ

Finishes:
○ AC White
● LJ Grey
● 36 Blue
● RN Charcoal
● MY Stainless Steel



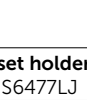
Shower seat
Code S1207XK

Folding
Fixed height with 650mm
projection
DDA compliant



Shower back rest
Code S1208XK

Finishes:
● XK Grey



Shower curtain rail
Code S6751AC

Angled shower curtain rail
1200 x 1200mm

Shower curtain
Code S675001

1500 x 2000mm

Finishes:
○ 01 White



Hinged support rail
Code S6361LJ

65cm
Available in range of
contrasting colours -
NHS HTM64

Finishes:
○ AC White
● LJ Grey
● 36 Blue
● RN Charcoal
● MY Stainless Steel

ARMAGLIDE 2



Shower set
Code B9308AA

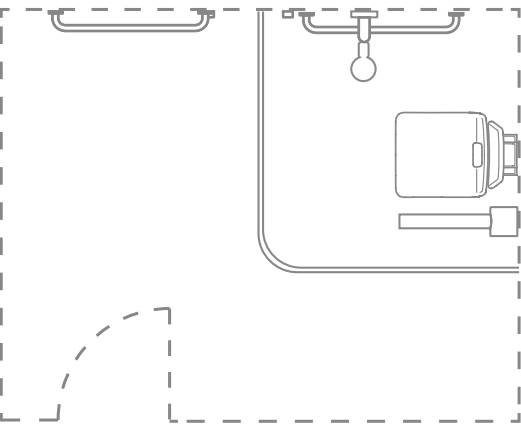
Single function hand spray
1.75m smooth hose
8 litre per minute flow
restrictor
Category 5 hose retainer

Finishes:
● AA Chrome

Improving safety and independence

This room specification features hinged support and grab rails, which are available in a range of colours for visually impaired users. It also includes a non-slip shower seat, which enables wheelchairs users to shower independently and is strong and durable.

Safety and durability are paramount in this room design, with the Contour 21+ thermostatic valve ensuring scalding is prevented.



Where it all comes together.



◀ CONTOUR 21
Shower curtain and rail

CONTOUR 21
Grab rail
▼

◀ ARMAGLIDE 2
Shower set

CONTOUR 21
Built-in thermostatic
sequential shower mixer
▼

CONTOUR 21
Shower back rest
▼

▲ CONTOUR 21
Shower seat

▲ CONTOUR 21
Support rail

Wheelchair shower room

CONTOUR 21



Built in thermostatic sequential shower mixer
Code A4129AA

Sequential shower valve
Extended easy use lever
Automatic safety shut off



Wall elbow
Code E4705AA

Finishes:
● AA Chrome



Grab rail
Code S6454RN

60cm
Available in range of contrasting colours

Finishes:
○ AC White
● LJ Grey
● 36 Blue
● RN Charcoal
● XG Black
● MY Stainless Steel



Handset holder
Code S6477RN

Finishes:
○ AC White
● LJ Grey
● 36 Blue
● RN Charcoal
● MY Stainless Steel

Shower curtain rail
Code S6751AC

Angled shower curtain rail
1200 x 1200mm

Shower curtain
Code S675001

1500 x 2000mm

Finishes:
○ 01 White

ARMAGLIDE 2



Shower set
Code B9308AA

Single function hand spray
1.75m smooth hose
8 litre per minute flow restrictor
Category 5 hose retainer

Finishes:
● AA Chrome

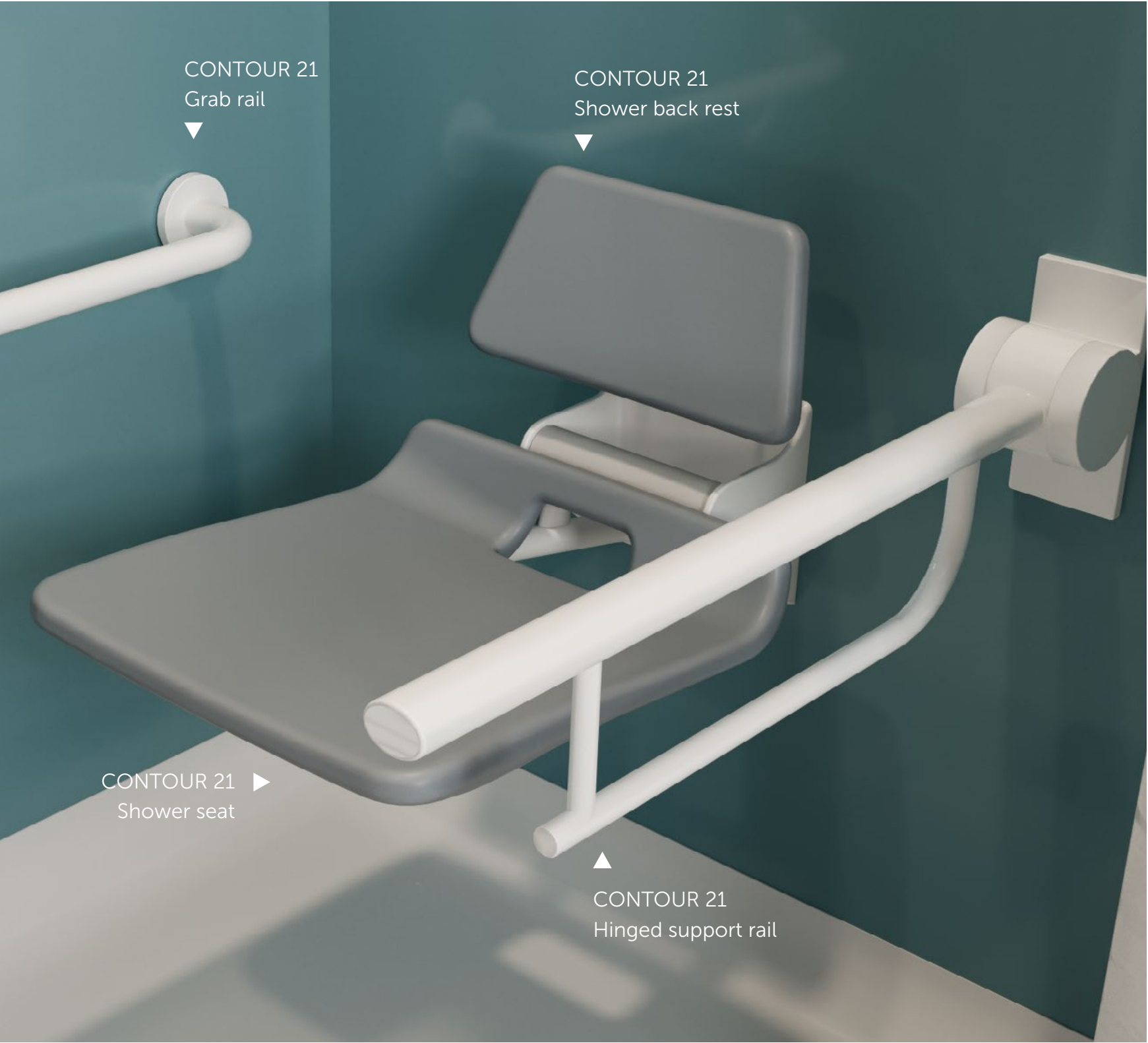


◀ ARMAGLIDE 2
Shower set

◀ CONTOUR 21
Handset holder

◀ CONTOUR 21
Built-in thermostatic
sequential shower mixer

CONTOUR 21
Grab rail
▼



Wheelchair shower room

CONTOUR 21



Shower seat
Code S1207XK

Folding
Fixed height with 650mm projection
DDA compliant



Hinged support rail
Code S636101

65cm
Available in range of contrasting colours - NHS HTM64

Contour 21+ 40cm back outlet basin
Code S0435HY

Markwik 21+ thermostatic basin mixer
Code A6696AA

Basin mixer fixing set
Code A6791NU

Contour 21+ wall-hung toilet
Code S3077HY

Contour 21 seat no cover, grey
Code S4066LJ

Toilet roll holder
Code S6363AC

Back rest cushion
Code S688467

Back rest rail - White
Code S6481AC

Contour 21 80cm grab rail white
Code S6457AC

Finishes:
● XK Grey

60cm
Available in range of contrasting colours

- Finishes:**
- AC White
 - LJ Grey
 - 36 Blue
 - RN Charcoal
 - XG Black
 - MY Stainless Steel

Infection prevention as top priority

Markwik 21+ mixers are our top-of-the-line healthcare brassware range, developed to meet the very challenging and changing needs of hospitals, with particular focus on their fight against infection from the constant threat of harmful biofilm build up.

They are designed for thermal disinfection and equipped with a built-in thermal cleansing feature. When combined with the Contour 21+ basin, featuring a clever patented Hydrofin design, to reduce splashing, this provides an effective team in your fight against bacteria and biofilm.

Where it all comes together.





MARKWIK 21+
Panel mounted mixer

CONTOUR 21+
Basin

Wash station

CONTOUR 21+



50 cm anti-splash
back outlet washbasin
Code S0430HY

Conforms to HBN 00-10
HTM64 (LB G M)

Easy fixation

Concealed back outlet
with anti-microbial
properties

Designed for ducted panel
services

50



60



Finishes:

- HY Glossy White
with SmartGuard+

Technology:

SmartGuard+

99% antibacterial and easy
to clean

ACCESSORIES



Waste and trap
Code S038667



Wall fixing set
Code S038867

MARKWIK 21+



Panel mounted
thermostatic basin
mixer
Code A6682AA

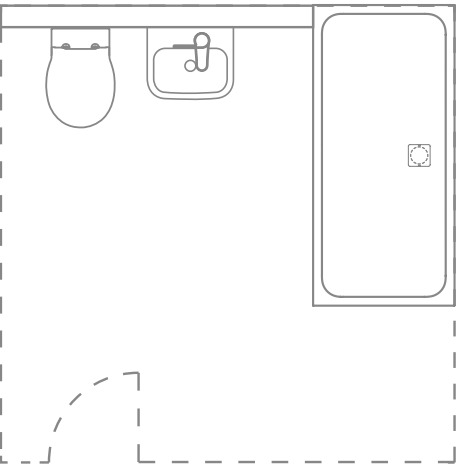
Finishes:

- AA Chrome

Comfort, away from home

Armitage Shanks offers patient-focussed solutions that are reassuring in their design whilst maintaining the highest standards of infection prevention and control. These feature aesthetics which are reminiscent of a reassuring home environment, but which strongly promote hygiene and well-being.

The Contour 21+ ceramics are coated with SmartGuard+, a fine glaze which protects against bacteria. In addition the smooth edged, fully shrouded WC makes for easier, more effective cleaning and fewer dust traps under the bowl.



Where it all comes together.



Private Care Bathroom

CONTOUR 21+



50cm back outlet basin
Code S0432HY

- Conforms to HBN 00-10 HTM64 (LB G S)
- One right hand tap hole
- Easy fixation
- Concealed back outlet with antimicrobial properties
- Designed for ducted panel services



- Finishes:**
- HY Glossy White with SmartGuard+

- Technology:**
- SmartGuard+
99% antibacterial and easy to clean

- Versions:**
- 40cm RH taphole - Code S0435HY
 - 40cm LH taphole - Code S0433HY
 - 50cm LH taphole - Code S0431HY

MARKWIK 21+



Thermostatic basin mixer
Code A6696AA

- Conforms to HTM 04-01 and HBN 00-10
- Single sequential lever
- Demountable with copper tails
- Top access D-08 auditing & servicing
- Demountable
- BioGuard outlet
- Thermal cleanse feature
- Detachable spout for easy sterilisation

- Finishes:**
- AA Chrome



Deck mounted basin mixer fixing kit
Code A6791NU

- Fixing kit for Markwik 21+ mixer A6696 when used with Contour 21+ back outlet basins.



◀ MARKWIK 21+ Basin mixer

▲ CONTOUR 21+ Basin

Private Care Bathroom

CONTOUR 21+



Wall-hung toilet
Code S0443HY

Conforms to HBN 00-10
HTM64 (WC HD)
Rimless technology
Standard projection

- Finishes:
- HY Glossy White with SmartGuard+

Technology:

SmartGuard*

99% antibacterial and easy to clean

ProSys® Technology



ProSys® WC frame 120M
Code R015367

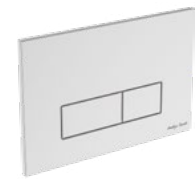


Toilet seat and cover
Code S067001

Slim seat and cover
Slow close

- Finishes:
- 01 White

OLEAS M2



Dual flush plate
Code S0767AA

Dual flush
Mechanical actuation

- Finishes:
- AC White
 - AA Chrome
 - JG Brushed Chrome
 - A6 Black

Versions:

Mechanical and pneumatic actuation options, 4 design options

OLEAS M2
Dual flush plate

CONTOUR 21+
Toilet seat and cover

CONTOUR 21+
Wall-hung toilet

Private Care Bathroom

CONTOUR 21



Thermostatic built-in shower mixer
Code A4129AA

- Sequential shower valve
- Extended easy use lever
- Automatic safety shut off

ACCESSORIES



Mirror with light and anti-steam, 120cm
Code T3344BH



Single towel rail, 45cm
Code A9117AA

ARMAGLIDE 2



Shower kit
Code B9306AA

- Single function hand spray
- 900mm rail and 1.75m smooth hose
- 8 litre per minute flow restrictor
- Category 5 hose retainer
- Adjustable wall fixings

ULTRA FLAT S



Shower tray
Code K8284FR

- Made from Ideal Solid®
- Stone effect finish
- Anti-slip surface
- 170 x 80 cm
- 30 mm tray thickness

I.LIFE



Walk-in shower panel
Code T4873EO

- 1200 mm wetroom panel
- 8mm toughened clear safety glass
- IdealClean treatment
- 25mm adjustment

Finishes:

- FR Pure White
- FS Concrete Grey
- FT Sand
- FV Jet black

Versions:

Available in a wide range of square and rectangular sizes



Straight bracing bracket
Code T4891EO

1000mm

Finishes:

- EO Bright Silver

Versions:

Panels available in sizes 700 mm to 1600 mm

Brackets available as extended, angle and ceiling models



Strong and durable designs

Armitage Shanks provides stainless steel solutions for a wide range of uses throughout healthcare environments. These include clinical sinks, scrub up troughs, as well as plaster sinks, janitorial units and sinks for staff areas.

Thanks to its unique properties, stainless steel is used widely in many applications throughout hospitals and healthcare facilities. It is easy to clean, non-porous and corrosion resistant, even when repeatedly sanitised with harsh chemicals.

All our stainless-steel products have been built to last, engineered and manufactured to withstand the daily demands of hospitals.

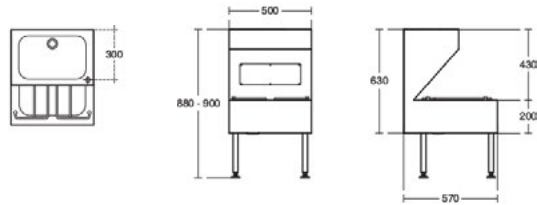


Janitorial unit with mixer tap

S3339MY - JANITORIAL UNIT JU



Janitorial unit with mixer tap in stainless steel



S1300MY - CLINICAL PROCEDURE DISPOSAL UNITS DU H



Stirling right hand back inlet slop hopper with work surface

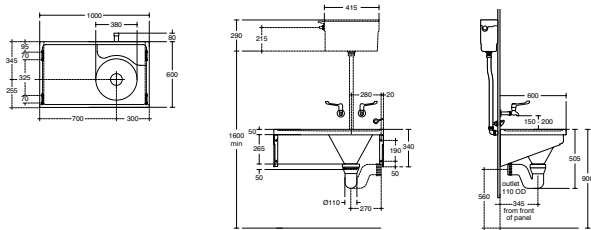
Taps:

MARKWIK 21
Code S8270AA
Lever action bib taps

Accessories:

Code B1684AA
100mm extension

Code B1686AA
1/2" wall mount for concealed plumbing



S1274MY - DOMESTIC SERVICE SINK SK 1



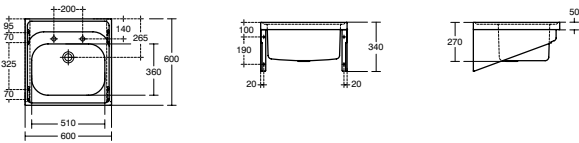
Doon sink
Single bowl
60 x 60cm
2 tapholes

Version:

Code S1277MY
No taphole option

Taps:

MARKWIK 21
Code S8265AA
High neck sink pillar taps



S1267MY - CLYDE PLASTER SINK PS H



Clyde left hand plaster sink with stainless steel cantilever brackets and strainer waste

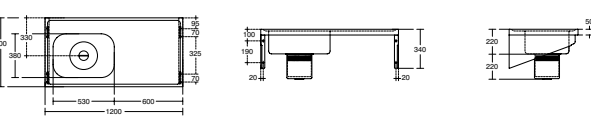
Taps:

MARKWIK 21
Code S8270AA
Lever action bib taps

Accessories:

Code B1684AA
100mm extension

Code B1686AA
1/2" wall mount for concealed plumbing



S1273MY - CLINICAL SINK ST A



Doon sink
Single bowl left hand drainer
120 x 60cm
No tapholes and no overflow

Versions:

Code S1276MY
Doon sink 120cm, single bowl with left hand drainer, 2 tapholes and no overflow.

Code S1244MY
Doon sink 120cm, single bowl with right hand drainer, 2 tapholes and no overflow

Code S1275MY
Doon sink 120cm, single bowl with right hand drainer, no tapholes and no overflow.

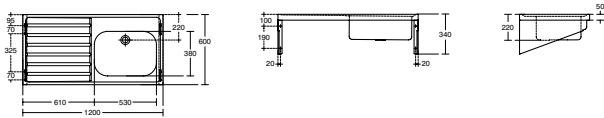
Taps:

MARKWIK 21
Code S8270AA
Lever action bib taps

Accessories:

Code B1684AA
100mm extension

Code B1686AA
1/2" wall mount for concealed plumbing



S1284MY - SCRUB-UP TROUGH SU H



Firth 240cm scrub-up trough
Right hand outlet strainer waste, trap cover and hangers

Versions:

Code S1283MY
Firth scrub-up trough 240cm LH waste.

Code S1281MY
Firth scrub-up trough 160cm LH waste.

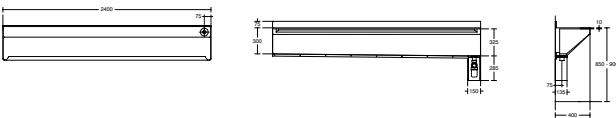
Code S1282MY
Firth scrub-up trough 160cm RH waste.

Code S1286MY
Firth scrub-up trough 80cm LH waste.

Code S1285MY
Firth scrub-up trough 80cm RH waste.

Taps:

MARKWIK 21+
Code A6684AA
Demountable panel mounted mixer with sensor and detachable spout



Guarantee

Lifetime on all ceramic products.

5 years on taps and mixers, toilet seats, stainless steel, solid surface materials and cistern fittings.

Our confidence in the quality and reliability of our product allows us to offer outstanding extended guarantees on all our products – where the product fails within 5 years/lifetime we offer a free replacement or replacement part (or nearest equivalent). So when your washroom has been satisfactorily installed and is working well, please ensure you register your guarantee.

This guarantee is transferable – it applies to the product not the purchaser provided the guarantee registration is passed on to the new owner.

Liability is limited to individual products and the guarantee does not cover the consequential loss or damage or installation costs. This guarantee does not affect your statutory rights. Products must be installed, used and cared for in line with our fixing instructions and local water regulations, and room must be adequately ventilated.

Parts (eg. flushvalves) are guaranteed for five years and will be replaced if found to be faulty.

Armitage Shanks

Armitage,
Rugeley,
Staffordshire, WS15 4BT
Tel 01543 490253
Fax 01543 491677

Armitage Shanks Dublin Ltd

3013 Lake Drive,
Citywest Business Campus,
Dublin 24
Tel: 003531 456 4525

www.idealspec.co.uk



*Armitage
Shanks*

The Armitage Shanks logo is written in a fluid, elegant script font, with "Armitage" on the top line and "Shanks" on the bottom line.