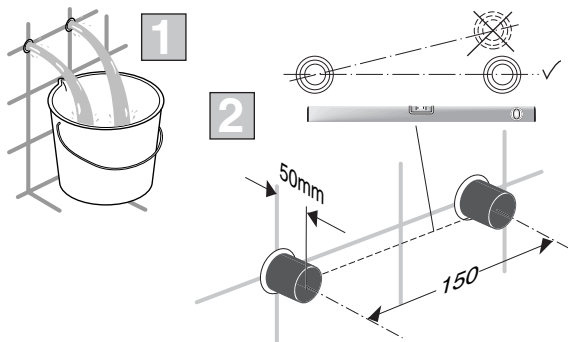
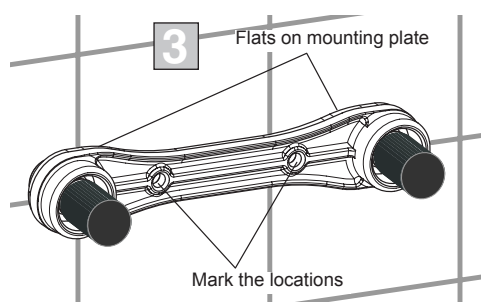




Guarantee only when installed by qualified plumber!

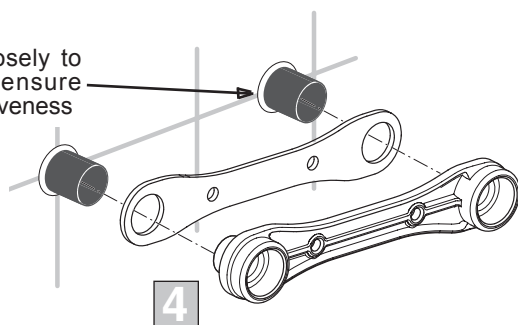


2. Two 15mm inlet pipes need to be run at 150mm centres which will have been identified as the location of the shower/bath fitting and cut two holes of diameter 25-30mm in the wall board. We recommend leaving 50mm of pipe protruding at this stage.



3. Place wall plate over pipework and onto the wall surface. A spirit level can be placed on the flats of the wall plate to ensure the level. Once at the correct position the two fixing holes can be marked. Drill two holes to suit appropriate wall fixings.

Note:-Tile closely to the pipe to ensure gasket effectiveness



4. Place gasket on the rear of wall mount plate

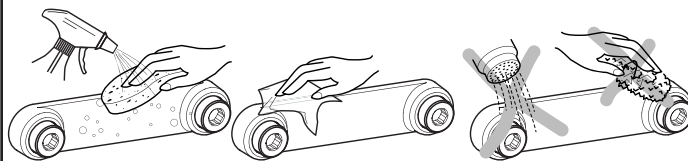


Ideal Standard
The Bathroom Works
National Avenue
Kingston upon Hull
HU5 4HS
Customer care line:
Tel.: 0870 1 29 6085



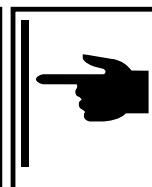
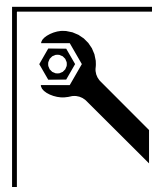
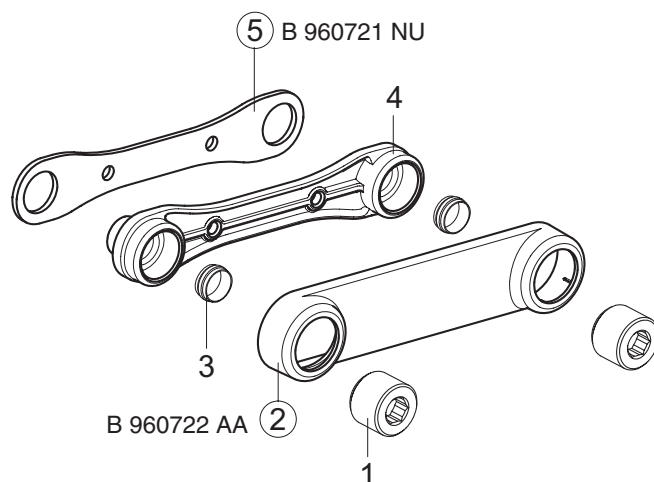
Maintenance

Clean immediately after use using only mild detergent and dry with a soft dry cloth.



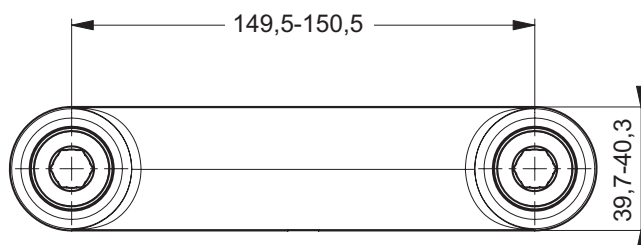
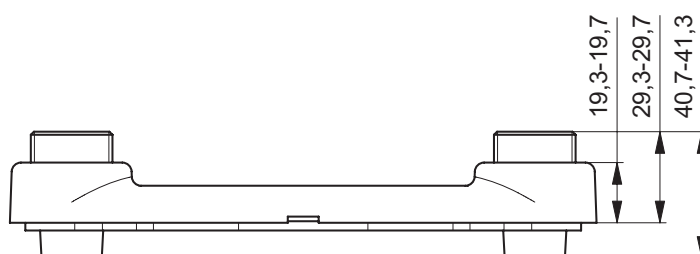
Ordering spares

XX = AA, AD,



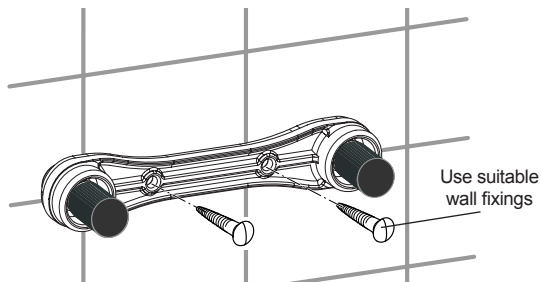
10.2008 / B 865 357

B 8634 ..

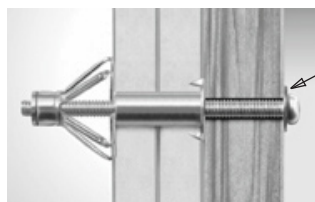




5

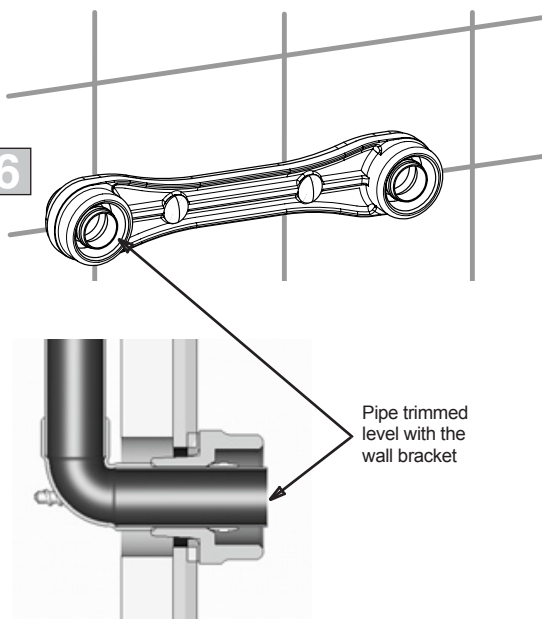


5. Tighten up the two screws until secure.
Note:-For plaster board duct it will be necessary to fit extra strong cavity anchor plasterboard fixings as shown.



Cavity anchor
plasterboard
fixing

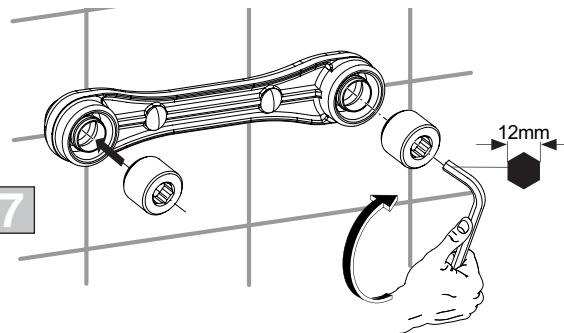
6



6. The pipes should be trimmed level to the wall bracket. If using a pipe cutter it will be necessary to mark the pipes and then remove the bracket before trimming to its correct length.

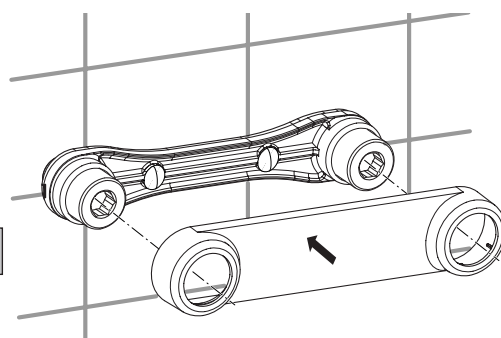
Note:-If the wall is to be subsequently tiled ensure there is sufficient movement in the duct pipework to allow the bracket to move forward by the thickness of the tiling.

7



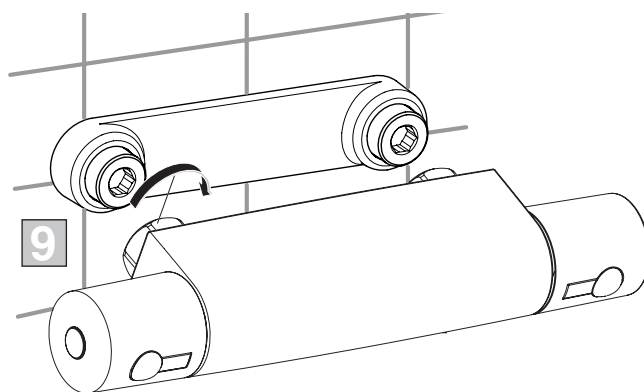
7. Fit the olives to the pipes prior to screwing the two $\frac{3}{4}$ "connectors into the wall mount plate using a 12mm allen key. The connectors will have to be securely screwed in to form the necessary compression joint between the olive, wall plate and connector.

8



8. Shroud can now be fitted to wall plate and should be positioned with the slot at the bottom.

9



9. Ensure the sealing washers are within the capture nuts of the shower/bath fitting. Fit the shower fitting to the mounting bracket as shown.

